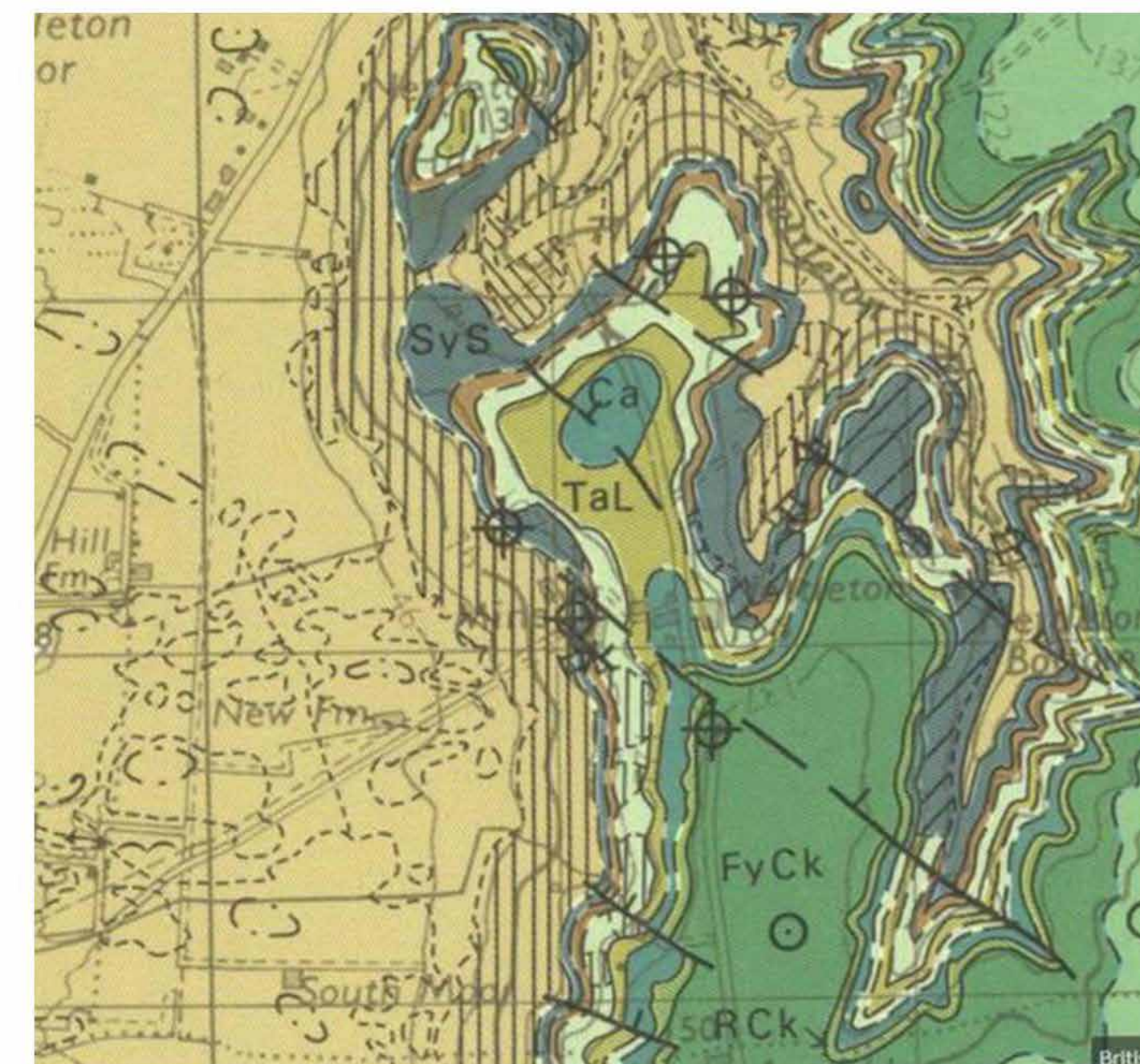


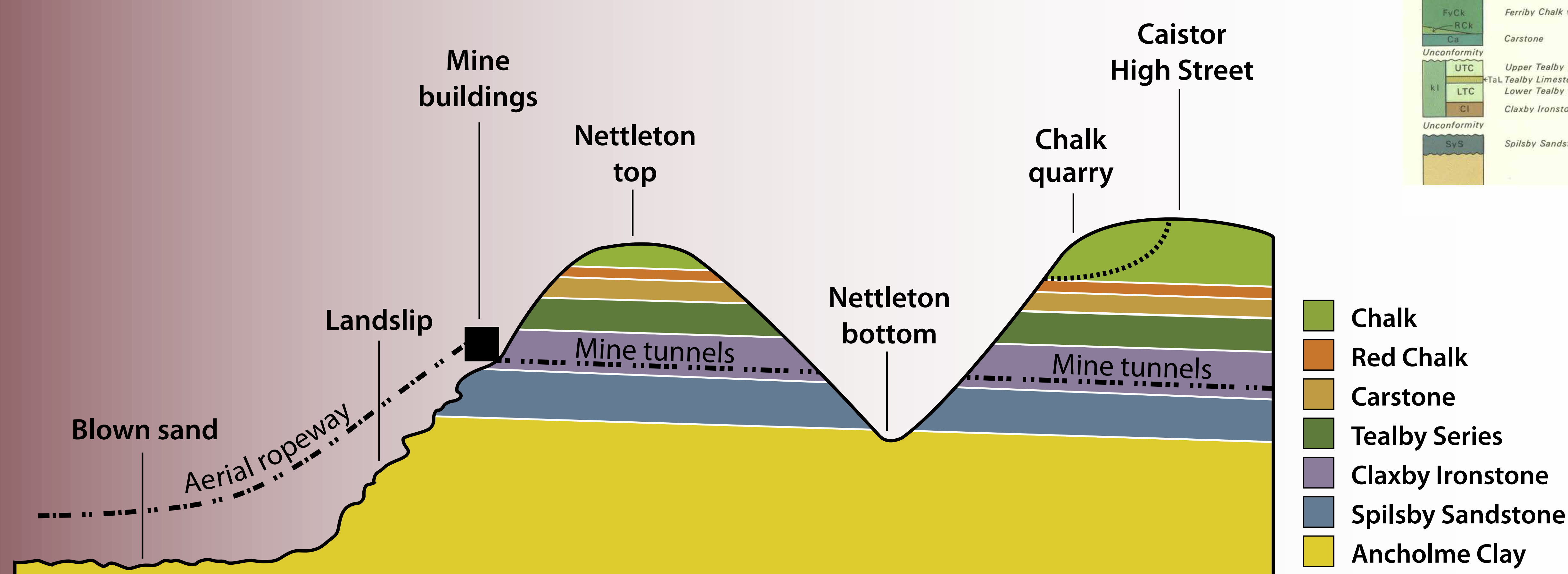
# Geology

The main rocks in the Nettleton area – ironstone, sandstone, limestone, mudstone and chalk - were deposited during the Cretaceous era around 65 million to 135 million years ago. Overlying sands and gravels came later, during the ice ages of the Pleistocene era, around 1.8 million years ago. Deposits of ironstone were mined and quarried during the last century at three locations near Nettleton Top. The low grade ore (20-30% iron content) was transported by rail to Scunthorpe for smelting.



Geology map of Claxby-Nettleton Area

Contains British Geological Survey materials © NERC



The iron ore was extracted from the Claxby Ironstone Formation.



Geomorphology at Claxby Mine

The geology of the west facing escarpment between Claxby and Nettleton is reflected in the landscape. The relatively hard limestone and ironstone beds are separated by softer, less durable mudstones, clays and sands. This is an unstable mix and there is much evidence of landslips along the bottom of the slope.



Claxby Ironstone outcrop at Claxby Mine

A small outcrop of Claxby Ironstone close to a collapsed entrance to the Claxby mine. It is a coarse iron rich oolite (sedimentary rock formed from tiny, spherical, fish-egg like grains), containing many fossil shells.



Belemnite in Claxby Ironstone

The fossilised remains of squid like creatures called belemnites are common in the sediments of the Claxby and Tealby Formations



Close up image of Claxby Ironstone showing 'gunshot' effect caused by tiny, spherical oolites

Fossils in wall of Nettleton Church

Claxby Ironstone was also used locally as a building material – Nettleton Church is a fine example and demonstrates that whilst being pleasing to the eye, Claxby Ironstone is not particularly resistant to the elements.



The Down Your Wold volunteers would like to thank H Bourne & Sons, the Brant family and the Society for Lincolnshire History and Archaeology for their help and assistance. There is no public access to any of the above sites. All images are copyrighted.



Landscapes for life

