

9. Making it Happen – Implementation, Monitoring and Review

9.1 Implementation

It is intended that the objectives and policies set out in the revised Management Plan will be embraced and acted upon by all those organisations and individuals that have a role to play in the management of the Lincolnshire Wolds AONB – in short, everyone. This includes landowners, voluntary organisations and interest groups, local authorities, parish councils, statutory agencies, regional bodies and government agencies.

The fundamental purpose of the Plan is to encourage integrated action by all who have an active interest in the management of the area. The subsequent Action Plan sets out a detailed five year proposed programme of work activity to help in the delivery of our policies and overriding objectives across the five themes:

1. Protecting the Wolds
2. Living and Working in the Wolds
3. Discovering the Wolds
4. Developing the Wolds
5. Partnerships in the Wolds

The Lincolnshire Wolds JAC has a key role to play in conjunction with the LWCS and the relevant local authorities in overseeing the promotion and implementation of the Plan and the Action Plan (Table 3). The monitoring procedures will enable us to measure the success of the Plan where it matters most – on the ground. Lead partners will help support the JAC, LWCS and the local authorities with the co-ordination of the Action Plan. The Action Plan details a comprehensive suite of tasks relevant to the strategic policies and the wider objectives of the Plan. As far as possible these are intended to be specific, measurable, achievable, realistic and time-bound in order to deliver a set of clear outcomes. They will be the subject of a regular annual review to help prioritise and target actions as resources and wider partnerships allow.



The Wolds JAC undertaking workshops for the peer review



Volunteers working in their local chalk stream

Item 9.1.1: Table 3 - The Lincolnshire Wolds AONB 5 Year Action Plan 2018-2023

Theme 1: Protecting the Lincolnshire Wolds

Biodiversity Objectives – Overarching (section 4.2.1)

Objective BO To protect, enhance and where appropriate, restore the biodiversity of the Lincolnshire Wolds AONB, aiding the development and relevant delivery of the Lincolnshire Nature Strategy, Biodiversity 2020, Natural England's Conservation 21 Strategy and emerging UK environmental plans (post Brexit) including A Green Future.				
Policies	Proposed Actions	Potential Lead Partners	Potential Others	Proposed Target
BP1 To survey and monitor key habitats and species within the AONB in-line with Lincolnshire, national and international aspirations for biodiversity.	BA1 Review and develop further baseline data to increase understanding and improve monitoring of the biodiversity of the AONB.	LWCS	Other relevant JAC partners GLNP	Ongoing
	BA2 Encourage community/voluntary biodiversity recording.	LNU LWCS LWT	Other relevant JAC partners	Ongoing
	BA3 Continue to research the spread and impact of invasive species on the biodiversity of the AONB.	EA	Other relevant JAC partners GLNP LWT NE	Ongoing
BP2 (see also Policy CCP3) To develop and promote a landscape-scale approach to habitat conservation, restoration and creation, helping habitats and species to develop resilience to future climate change through increased habitat linkages and providing for enhanced ecosystem service networks.	BA4 Build upon agri-environment scheme/s to promote uptake in Wild Pollinator and Farmland Wildlife Packages specifically designed to link and extend habitat corridors and protect watercourses.	LWCS LWT NE	Other relevant JAC partners	Ongoing
BP3 To support and encourage agricultural guidance and good practices that protect, enhance and restore wildlife habitats across the AONB, helping to minimise the need for regulatory enforcement.	BA5 Continued promotion through agri-environment scheme/s and Catchment Sensitive Farming (CSF) initiatives.	NE	CLA Defra LWCS	Ongoing
BP4 Utilising the concept of natural capital to develop and promote general awareness and appreciation of the wildlife of the AONB and maximise the benefits of wider socio-economic gains including utilising wider links to the local nature tourism offer.	BA6 Seek to influence and shape appropriate targeting via future agri-environment scheme/s.	NE	GLNP LWCS	Ongoing

See also Appendix 8a for the full list of acronyms

Biodiversity – Meadow, Pasture and Wet Grassland (section 4.2.2)

Objective GO To increase the extent and quality of wildlife-friendly grasslands across the AONB, targeting areas close to Local Wildlife Sites, watercourses, important road verges, archaeological sites, historic parkland and settlements. <i>(See also Linc's Nature Strategy - LNS – for links with wider lowland grassland habitat targets)</i>				
Policies	Proposed Actions	Potential Lead Partners	Potential Others	Proposed Target
GP1 To help maintain, enhance and where appropriate restore, extend or connect grasslands of high wildlife, historic and landscape value.	GA1 Restore and maintain favourable conservation status to all grassland SSSI sites in the AONB supporting landowners with pro-active management.	NE	Landowners	50% (in area) by 2023
	GA2 Restore and maintain positive conservation management across all grassland Local Wildlife Sites.	GLNP LWCS	Landowners LWT NE	70% by 2023
	GA3 (see also FWA1 & FWA7) Promote, advise and encourage farmers and landowners uptake in agri-environment measures to increase the extent of biodiversity rich grasslands.	NE	Landowners LWCS	15 ha by 2023
GP2 To raise community awareness of the rich natural and cultural heritage of the Wolds' grassland.	GA4 (see also VLA6 & TCA13) Facilitate local events to increase awareness of the Wolds' grassland including via the Campaign for the Farmed Environment network.	LWCS	GLNP LWT NE	5 events by 2023
	GA5 Review and support further training opportunities to widen the voluntary skill base for ecological surveying, including utilising the LWT's Love Lincs Plants and exploring Plantlife campaigns.	LWT	GLNP LWCS Local specialist volunteers Plantlife	50+ volunteers by 2023
GP3 To support initiatives to encourage grazing of less productive grasslands, including calcareous grassland.	GA6 (as FWA6) Review and develop support networks for local graziers to aid future livestock management, including access to specialist advice on rare breeds.	NE	Defra LWCS LWT	Ongoing
GP4 To promote to land managers the additional benefits of good grassland management including carbon sink, climate change and flood alleviation impacts.	GA7 (see also GA4, VLA6-7, SA3 & FWA2) Research and coordinate specialist training/awareness opportunities in tandem with GA4 including utilising the agri-environment scheme/s and the Countryside Stewardship Facilitation Fund (CSFF) focusing on grassland management advice and support for land managers in the AONB.	LWCS NE	GLNP LCC LWT	3 events by 2023

Biodiversity – Grass Verges and Green Lanes (section 4.2.3)

Objective VLO To retain, restore and encourage, positive management of the distinctive grass verges along the AONB's roadsides and green lanes. <i>(See also LNS for links with wider lowland grassland habitat targets)</i>				
Policies	Proposed Actions	Potential Lead Partners	Potential Others	Proposed Target
VLP1 To help maintain, enhance and where appropriate restore, extend or connect, grass verges for their wildlife and landscape value.	VLA1 Continue to survey and monitor all Roadside Nature Reserves (RNRs) in the AONB, utilising online recording systems.	LWT	Local specialist LCC LNU NE	Ongoing on a 3 year cycle
	VLA2 Restore all RNRs to favourable conservation status.	LWT	LCC NELC Landowners	100% by 2023
	VLA3 Review and encourage suitable verge cutting management to enhance biodiversity, avoiding compromising vehicle sight lines.	LCC NELC	LWT LWCS Landowners Specialist contractors	50 km by 2023
	VLA4 Minimise litter and fly-tipping on road verges and green lanes with an awareness campaign and deal with any incidents promptly.	ELDC NELC WLDC	LCC EA	Ongoing+ 1 x publicity campaign by 2023
	VLA5 Maintain liaison between highway authorities, landowners, interest groups and local communities to minimise illegal vehicle encroachments.	LCC NELC	Parish Councils Landowners Interest groups	Ongoing
VLP2 To raise awareness and local engagement in the natural and cultural heritage of grass verges and their contribution to green infrastructure and climate change adaption.	VLA6 (see also GA4 & GA7) Research and coordinate specialist awareness raising opportunities linking with wider grassland management issues.	LWCS	GLNP LCC LWT NE	1 event by 2023
	VLA7 (see also GA7) Promote and implement appropriate recommendations from the AD Biomass Trial to support verge management for nature conservation and wider gains.	LCC NELC	LWT LWCS Landowners Specialist contractors	Ongoing

Biodiversity - Woodlands, Beech Clumps and Traditional Orchards (section 4.2.4)

Objective WBO To protect, enhance, and where appropriate extend, the woodland and tree cover within the AONB, maximising their contribution to the AONB by integrating landscape, biodiversity and socio-economic benefits. (See also LNS for wider links with Trees and woodland; Lowland mixed deciduous woodland; Traditional orchards; Wet woodland HAP; and Wood-pasture and parkland targets)				
Policies	Proposed Actions	Potential Lead Partners	Potential Others	Proposed Target
WBP1 To reinforce the existing pattern of woodland, seeking to increase the area of native broadleaved woodland (including wet woodland), accepting some non-native planting for climate change adaptability.	WBA1 Encourage uptake of grants and specialist advice to aid sustainable management of existing woodlands for biodiversity.	FC	CLA Landowners LCC LWCS NE NFU	10 ha by 2023
	WBA2 Promote uptake of grants to encourage appropriate new planting schemes, particularly adjacent to existing ancient semi-natural woodlands, and linking areas of existing habitats.	FC	CLA Landowners LWCS NE NFU	10 ha by 2023
WBP2 To re-establish complementary habitats adjacent to woodlands.	WBA3 Promote uptake of grants and specialist advice to encourage complementary neighbouring biodiversity habitats, including pasture and in-field crop options.	NE	CLA Landowners LWCS NFU	10 ha by 2023
WBP3 To record the extent and location of small ancient woodlands as part of an integrated digital resource database for the Lincolnshire Wolds woodlands.	WBA4 Encourage continued mapping of the small woodland resource across the AONB including beech clumps.	LWCS GLNP	FC NE	Ongoing
WBP4 To encourage and support woodland business schemes, of an appropriate scale, within the AONB.	WBA5 Encourage uptake of grants (FC, LAZ-LEADER, RDPE & SDF) and specialist advice to support local woodland/timber businesses.	FC	CLA Landowners LWCS NFU	Ongoing
	WBA6 (see also FWA11) Organise and promote an autumn festival event to help market locally produced timber, enhancing links between businesses and potential customers.	Business operators	FC LWCS	1 event by 2023
WBP5 To establish the extent and quality of traditional orchards and encourage suitable restoration, creation and management.	WBA7 Review the results of the pilot voluntary orchard surveying project (ground-truthing the PTES inventory) with a view to aiding a wider roll-out of evidence gathering, including the type and frequency of local varieties.	LWCS GLNP	EoEAO Landowners LCC NE PTES	Ongoing
	WBA8 (see also FWA11) Promote annual Apple Day and other local events to encourage wider awareness of the orchards in the AONB and their management requirements.	LWCS NT GLNP	CG EoEAO LCC	3 events promoted by 2023

Biodiversity – Hedgerows and Landmark Trees (section 4.2.5)

Objective HTO To protect, manage, enhance and where appropriate increase, the hedgerows and landmark trees in the AONB. (See also LNS for wider links with Hedgerows and hedgerow trees targets)				
Policies	Proposed Actions	Potential Lead Partners	Potential Others	Proposed Target
HTP1 To help record, maintain, and where appropriate restore all species-rich and ancient hedgerows, encouraging planting and management of hedgerows and trees to benefit landscape and habitat connectivity.	HTA1 Explore and develop funding applications to help support landscape-scale enhancement projects (to include potentially the Lincolnshire Wolds Greenway and Bluestone Heath Road initiatives).	LWT LWCS	EH GLNP Parish Councils	Review by 2019
	HTA2 Provide specialist advice and encourage uptake of agri-environment grants and the AONB Grant Scheme to support species-rich/ancient hedgerows and landmark trees.	LWCS NE	ELDC LCC NELC WLDC	5+ schemes supported per annum
HTP2 To raise awareness of the importance of hedgerows and landmark trees for wildlife, landscape and cultural values and encourage future community engagement.	HTA3 Continue to promote and encourage the tree warden scheme and training programme throughout the area.	ELDC LCC NELC TCV WLDC	Parish Councils	Ongoing
	HTA4 Continue to review and promote various tree advisory notes, including those pertaining to new and emerging pests and diseases (e.g. Chalara and Acute Oak Decline).	FC LWCS	ELDC LCC LWT NELC NFU WLDC	Ongoing
	HTA5 Encourage and support local cultural events to celebrate and inspire interest in the special values of our hedgerow and tree resource.	LWCS LWT	ELDC LCC NELC Parish Councils WLDC	3 events by 2023

Biodiversity – Rivers, Streams and Ponds (section 4.2.6)

Objective RSPO To improve, where appropriate, the function and natural environment of the river and stream catchments and their associated landscape character and wetland habitats. <i>(See also LNS for wider links with Rivers and wetlands; Chalk streams and blow wells; Ponds, lakes and reservoirs; Rivers, canals and drains; Springs and flushes targets)</i>				
Policies	Proposed Actions	Potential Lead Partners	Potential Others	Proposed Target
RSPP1 To maximise the extent of low-input land management adjacent to all rivers and streams and utilise floodplains to minimise impact of flooding in residential areas.	RSPA1 Promote and develop agri-environment schemes and woodland planting schemes to enhance the AONB's river valley landscapes where appropriate.	FC LCSP NE	EA Landowners LCC LWCS	Ongoing
	RSPA2 (see also AFA2 and SA4) Create low-input managed land adjacent to the area's streams and rivers.	LCSP	NE	50 km by 2023
RSPP2 To rehabilitate streams and rivers to enhance their biodiversity and ecological status where appropriate and consistent with flood defence requirements and Water Framework Directive (WFD) targets.	RSPA3 Facilitate, support and promote the Lincolnshire Chalk Streams Project (LCSP) under the guidance of its Steering Group.	AW EA NE LWCS	LWT WTT	Ongoing work programme review – 4 meetings per annum
	RSPA4 Influence and work with landowners to introduce a variety of in-stream and bankside enhancement measures.	LCSP	EA GLNP	5 km of river restoration by 2023
	RSPA5 (see also SA3 & FWA2) Coordinate delivery of the partnership Countryside Stewardship Facilitation Fund (CSFF) working with landowners in the Great Eau catchment.	LCSP	AW EA NE	3 events by 2021
RSPP3 To raise community awareness and where possible, community involvement, of the rich diversity of water habitats within the Wolds and how their actions impact upon this resource.	RSPA6 Facilitate a series of local events to increase public awareness of the Wolds' wetland heritage.	LCSP	LWT	5 events by 2023
	RSPA7 Provide a range of specialist talks, demonstration events and guided walks under the LWCS/LCSP banner.	LCSP	LWCS	12 activities by 2023
	RSPA8 Facilitate a range of practical volunteering activities, seeking engagement from the local communities.	LCSP	AW EA WTT	6 activities by 2023
	RSPA9 Develop and support a network of volunteer recorders under the riverfly monitoring project banner; utilising future opportunities via the Citizen Science initiative.	EA LCSP	AW LWT	2 further specialist training events + ongoing support.
RSPP4 To continue to further our understanding of the springs and pond resource found across the Wolds.	RSPA10 Encourage continued mapping of the small wetland resource across the AONB, utilising volunteer assistance where possible.	GLNP LWT	LCSP LWCS	Ongoing

RSPP5 To encourage the enhancement of existing ponds and other wetland habitats for biodiversity, landscape and wider socio-economic gains.	RSPA11 Provide advice and encourage practical enhancements for pond, lake and wetland management and where appropriate creation.	LCSP LWCS	EA LWT NE TCV	3 sites by 2023
RSPP6 To influence any future water storage schemes to encourage multiple benefits for biodiversity, landscape, flood prevention and wider ecosystem goods and services.	RSPA12 Provide relevant advice and support on any forthcoming storage or flood alleviation schemes.	EA LCC	LCSP LWCS LWT NE	Ongoing
RSPP7 To seek to maintain groundwater levels and their seasonal fluctuations wherever possible to safeguard rivers, streams, springs and ponds sufficient to retain characteristic wildlife communities.	RSPA13 Monitor, maintain and enhance the biological grading and flow rates of streams and rivers in the AONB.	EA	LCSP	95% to be in moderate/ good condition by 2023
	RSPA14 Seek to influence the development and implementation of all relevant Catchment Abstraction Management Strategies (CAMS) and Catchment Sensitive Farming (CSF) programmes to safeguard AONB interests.	EA LCSP NE	AW JAC LWCS	Ongoing
	RSPA15 Comment, monitor and respond to new implications from the Water Framework Directive.	EA	AW JAC LCSP	Ongoing
	RSPA16 Advise and support future chalk and Spilsby Sandstone groundwater modelling studies including impacts of siltation and diffuse pollution.	EA	LCSP NE	Abstraction models reviewed by 2023
	RSPA17 Review and where possible, minimise the presence of stream/river barriers to natural fish/aquatic migrations.	EA LCSP	AW	Ongoing
	RSPA18 Explore and encourage the practical applications of SUD (Sustainable Urban Drainage) systems to help support sustainable water management.	EA	Las	Ongoing

Biodiversity – Arable Farmland (section 4.2.7)

Objective AFO To improve the abundance and diversity of characteristic farmland wildlife within the commercially farmed landscape. (See also LNS for wider links with Farmland birds targets)				
Policies	Proposed Actions	Potential Lead Partners	Potential Others	Proposed Target
AFP1 To encourage maximum take-up of agri-environment scheme options that provide enhanced conditions for arable farmland wildlife.	AFA1 (see also FWA1) Promote, advise and assist farmers and landowners on relevant agri-environment stewardship measures including utilising the CS Wild Pollinator and Farmland Wildlife Package (WPFWP).	Defra NE	CLA Landowners LWCS NFU	Ongoing
AFP2 To improve awareness of commercial farming's 'good practices' that can bring additional wildlife and landscape benefits including greater use of Integrated Pest Management (IPM) and low-input systems.	AFA2 (see also RSPA2 and SA4) Utilise farmers' networks to explore and promote environmental management systems for farms to share good practice.	CLA NFU	Defra Landowners LWCS NE	Ongoing
	AFA3 Continue to support and promote Open Farm Sunday events in the Wolds, encouraging engagement with harder to reach groups.	CLA LEAF NFU	Landowners LWCS	1 event per annum
AFP3 To encourage surveys to improve information on distinctive arable wildlife (e.g. native herbs and grasses, pollinators and farmland birds), helping to provide a wider evidence base to inform future land management for the area.	AFA4 Continue to identify selection of key sites for future monitoring of arable farmland – where possible linking with GLNP arable plants report on trends and distribution.	LNU LWCS	Landowners GLNP NE	5 new sites by 2023
	AFA5 Develop a subsequent monitoring programme utilising volunteers where possible.	LNU	GLNP LWCS	Review and amend baselines by 2023

Earth Heritage – Geodiversity (section 4.3.1)

Objective GDO To protect and enhance the geological and geomorphological features of the AONB for enjoyment, education and research				
Policies	Proposed Actions	Potential Lead Partners	Potential Others	Proposed Target
GDP1 To work with partners and landowners to safeguard and improve the intrinsic interest of geological and geomorphological sites, including improved access.	GDA1 Work with partners to deliver, monitor and review the Lincolnshire Geodiversity Strategy.	GLNP	LWCS	Ongoing
	GDA2 Encourage and support the review and reclassification of RIGS sites to Local Geological Sites.	ELDC GLNP NELC WLDC	LWCS NE	Review the remaining RIGS by 2020
	GDA3 Maintain support and engagement with the Lincolnshire Geodiversity Group and GeoConservationUK.	LWCS	GLNP LWT NE	Ongoing
GDP2 To maintain and enhance awareness and understanding of the geological and geomorphological interest through general and site specific interpretation.	GDA4 Encourage and support appropriate on-site interpretation.	LGG	Landowners LWCS NE	3 further sites by 2023
	GDA5 Continue to review and promote the Wonder of the Wolds Geology leaflet and relevant partner publications.	LWCS	LGG	Ongoing
	GDA6 Organise and support public events and field trips to promote the geodiversity resource in the Wolds.	LWCS	LGG	3 events by 2023

Earth Heritage – Soils (section 4.3.2)

Objective SO To protect and enhance the soil resource for water protection, flood management, agricultural management, biodiversity and carbon storage				
Policies	Proposed Actions	Potential Lead Partners	Potential Others	Proposed Target
SP1 To work with partners and landowners to safeguard and improve the soil resource, anticipating future pressures from climate change.	SA1 Monitor the application of measures to safeguard and protect the soil resource.	CSF EA LCSP	ELDC IDB NELC WLDC	Annually
	SA2 Encourage and support voluntary measures to further improve and protect the resource via agri-environment schemes, CFE and planting schemes.	CFE CLA NFU	EA FC GLNP LWCS NE	A further 6 schemes by 2023
SP2 To increase awareness and understanding amongst landowners, land managers and other practitioners of the different soil types and their relationship to the wider landscape and other environmental and socio-economic issues and services.	SA3 (see also GA7, RSPA5 and FWA2) Organise and support events that raise awareness of different soil types and good practice for their management, utilising links with the Countryside Stewardship Facilitation Fund (CSFF).	GLNP LWCS	CLA LGG NE NFU	3 by 2023
	SA4 (see also RSPA2 and AFA2) Explore land management techniques to aid soil protection and minimise water course sedimentation.	EA IDB	AW CSF FC LCSP LWCS NE NFU	Ongoing

Archaeology (section 4.4.1)

Objective AO To protect, appropriately manage and enhance archaeological and historic features, and their wider landscape setting within the AONB, preventing further loss or damage.				
Policies	Proposed Actions	Potential Lead Partners	Potential Others	Proposed Target
AP1 To work with a range of partners and community groups to encourage and support research projects that can help increase our knowledge of the Wolds' heritage, identifying sites of key importance and promoting better understanding of the complexity of risk, particularly from climate change.	AA1 Continue to coordinate a specialist sub-group (the Heritage Working Group - HWG) to address the issues of archaeological sites and SMs at risk in the Wolds.	LWCS	HE HL LCC NELC	3 meetings per annum
	AA2 Review the findings and recommendations of the Long Barrows research project to help aid and inform future management practice.	HE HTL NE	HWG LCC LWCS NELC	Ongoing
	AA3 Continue to offer support to local history groups for surveys, information gathering and interpretation material, including projects to aid what and how features are at risk.	LCC LWCS	HL HWG NELC	Support on request
	AA4 Seek to explore and understand direct and secondary climate change impacts upon the archaeological heritage of the AONB by engagement with current and future research.	HE	HL HWG LCC LWCS NELC	Ongoing
	AA5 Continue to support and guide the use of the countywide Historic Landscape Characterisation as a management tool.	LCC	HE HL HWG NELC	Ongoing
	AA6 Continue to utilise opportunities from the countywide Layers of History Project to develop and support further Wolds' community heritage projects.	HL LWCS	HaR HWG LCC NELC	By 2023
AP2 To raise awareness of archaeological heritage in the Wolds, working with local communities, farmers, landowners, land managers, utility companies and relevant contract workers to support positive management.	AA7 Promote opportunities for funding support for key sites including SMs identified as high risk by Historic England.	HE	HL LCC LWCS NELC	Ongoing
	AA8 Promote and encourage maximum take up of agri-environment scheme options that maintain & enhance archaeological sites, including those at risk.	LCC NELC	HE LWCS Landowners NE	Ongoing via CS agreements
	AA9 (see also BHA5) Utilise the Layers of History training programme to encourage voluntary stewards and local groups to undertake surveys across the Wolds.	HL	HWG LWCS	Ongoing
	AA10 (see also MA3) Support AONB focused data collection and review as part of the wider Selected Heritage Inventory for Natural England (SHINE) and the Defra monitoring programmes.	Defra NE	HE HL LCC LWCS NELC	By 2020
AP3 To increase and enhance appropriate public access and interpretation to sites of archaeological and historic interest, in consultation with landowners.	AA11 In consultation with landowners and tenants, provide new access opportunities to suitable archaeological sites in the Wolds.	LCC NELC	HE HL Landowners LWCS	3 sites by 2023
	AA12 Provide regular data to aid monitoring of the heritage interests and features of the AONB.	HE LCC NELC	HL LWCS	Annually

Built Heritage (section 4.4.2)

Objective BHO To protect and enhance the historic and locally distinctive character of rural settlements, buildings and features within the AONB. (See also Section 7.1 Planning)				
Policies	Proposed Actions	Potential Lead Partners	Potential Others	Proposed Target
BHP1 To work with property owners, residents, owner occupiers and developers to encourage sympathetic and innovative design and management of buildings in keeping with local distinctiveness and character.	BHA1 Continue to coordinate the specialist Heritage Working Group (HWG) to advise and support built heritage interests in the AONB including a focus on Listed Buildings deemed to be "at risk".	LWCS	HE HL LCC NELC	3 meetings per annum
	BHA2 (see also TCA1 & PA2) Promote the development and use of Village Design Statements, Neighbourhood Plans, Parish Plans and Place Check surveys.	CL CPRE	ELDC LCC LWCS NELC WLDC	Ongoing
	BHA3 (see also BHA7) Seek funding and external support to develop a design guide to help aid and inform future sympathetic design and management of buildings.	HE HWG LWCS	ELDC HL LCC NELC WLDC	Reviewed by 2020
	BHA4 Explore and utilise future good practice for public realm design via promotion and implementation of the Lincolnshire Streetscape Design Manual (Every Street Matters).	LCC NELC	HL LWCS	Ongoing
BHP2 To work with a range of partners and community groups to raise awareness of the built heritage in the Wolds and increase understanding of its contribution to the AONB.	BHA5 (see also AA9) Actively promote the Layers of History project encouraging wide community uptake in the voluntary Heritage Stewards scheme.	HL	ELDC HE LCC LWCS	By 2021
	BHA6 In consultation with landowners and/or property owners encourage and support on-site access and interpretation.	HL	HE LCC LWCS NE NELC	3 sites by 2023
BHP3 To encourage and support sympathetic repair and sustainable re-use of redundant buildings for uses directly supportive of the local economy, encouraging use of local materials.	BHA7 (see also BHA3) Identify buildings which are redundant and have potential for refurbishment/re-use, and develop linkages with appropriate funding mechanisms e.g. High Tier, Leader-LAZ, RDPE.	HWG LCC	ELDC HL LAZ LWCS NE NELC WLDC	Ongoing
BHP4 To embrace appropriate technologies that promote sustainability and energy efficiency whilst complementing the AONB's special character.	BHA8 To offer specialist advice and signposting to encourage wider use of relevant technologies and innovative design solutions.	ELDC LCC NELC WLDC	HL LWCS	Ongoing

Theme 2: Living and Working in the Wolds

Farming and Field Sports in the Wolds (section 5.1)

Objective FWO To acknowledge and promote sustainable farming as a key activity in maintaining the Wolds' landscape character and other natural and heritage assets.				
Policies	Proposed Actions	Potential Lead Partners	Potential Others	Proposed Target
FWP1 To develop and promote agricultural good practice to conserve and enhance the natural beauty and landscape character of the Wolds.	FWA1 (see also AFA1) Continue to promote, advise and assist farmers and landowners on relevant agri-environment stewardship measures.	NE	CLA Landowners LCSP LWCS NFU	Ongoing
	FWA2 (see also GA7, RSPA5 and SA3) Continue to encourage and support farmers' awareness raising and networking events to help share good practice utilising links with the Countryside Stewardship Facilitation Fund (CSFF).	NFU CLA	Landowners LWCS NE	3 by 2023
	FWA3 Explore and develop a series of case studies to help demonstrate and promote examples of good practice.	NFU CLA	Landowners LWCS NE	Ongoing
FWP2 To monitor and proactively influence changes in local, regional and national agriculture policy to maximise benefits to farmers in the Wolds.	FWA4 In the light of Brexit, seek to influence national rural development policies to bring positive benefit to farmers in the Wolds.	JAC NAAONB	CLA Defra GLNP NFU	Ongoing
	FWA5 Explore and utilise current initiatives (such as the Facilitation Fund), to encourage continuing financial incentives for 'on-farm' environmental measures.	CLA CFE NE NFU	GLNP LWCS LWT	Ongoing
FWP3 To encourage and support initiatives to sustain livestock farming in the AONB.	FWA6 (as GA6) Review and develop support networks for local graziers to aid future livestock management, including access to specialist advice on rare breeds.	NE	CLA LWCS LWT NFU	Ongoing
	FWA7 (see also GA3) Support, promote and encourage arable reversion to pasture where appropriate, and multiple benefits, can result (e.g. species rich grasslands, heritage and soil protection, new habitat links).	NE	CLA Defra Landowners LWCS LWT	15 ha by 2023
	FWA8 Promote and encourage opportunities for niche branding and local co-operative ventures to help market a wide range of Wolds based livestock products.	CLA LCC	Landowners LWCS NELC NFU	Review by 2020

FWP4 To support farm diversification schemes appropriate to the AONB and which accord with planning policy.	FWA9 Work with landowners to promote and encourage high quality diversification projects utilising Lindsey Action Zone, RDPE and the Sustainable Development Fund for financial assistance.	Defra LAZ LWCS	CLA NFU	Ongoing
	FWA10 Recognise and support the role of local, small-scale and appropriate ventures to support the economy, seeking multiple benefits to the special qualities of the Wolds.	ELDC LWCS NELC WLDC	CLA NFU	Ongoing
FWP5 To seek to maintain traditional rural skills and activities that can protect, appropriately manage and enhance the landscape.	FWA11 (see also WBA6 & 8, TCA3 & TCA11-12) Encourage promotional opportunities for a wide range of rural businesses, developing contacts to support local markets, cultural events and aid rural skills development.	CLA LCC NFU	ELDC LWCS NELC WLDC	Ongoing
	FWA12 (see also TCA 11-12 & ARTA14) Promote common links with the Greater Lincolnshire Local Enterprise Partnership, and range of local producers to support the local economy, including opportunities for aiding skills development.	LCC	CLA ELDC LWCS NELC NFU	Ongoing
FWP6 To recognise and support the contribution of well-managed field sport activities for the benefits of wildlife, rural character and the local economy.	FWA13 (see also ARTA8) Support and promote existing initiatives that contribute towards sustainable field sports activities.	CLA	LWCS NFU	Ongoing
	FWA14 Quantify the benefits of sustainable field sports activities to the AONB and raise awareness of these benefits.	CLA	LWCS NFU	Ongoing
FWP7 To raise awareness within the farming community of the growing issues of climate change, sustainable energy and carbon management.	FWA15 Research and coordinate specialist training/awareness opportunities to explore whole farm approaches to climate change mitigation and adaptation.	LWCS NE	CLA Defra EA GLNP NFU	1 event by 2023

Thriving Communities (section 5.2)

Objective TCO To support and promote partnership activity to help safeguard and enhance the prosperity and well-being (quality of life) of communities within the Wolds AONB, ensuring the Wolds remain a place to live, work, invest in, and visit, whilst meeting the needs of this unique landscape. (See also Section 7 Developing the Wolds)				
Policies	Proposed Actions	Potential Lead Partners	Potential Others	Proposed Target
TCP1 To foster safe, vibrant and inclusive communities, working with relevant agencies to support local businesses and communities, encouraging both innovation and wider good practice.	TCA1 (see also BHA2 & PA2) Seek to encourage, influence and support Parish and Neighbourhood Plans, including opportunities for engagement with hard to reach groups.	CL CPRE LWCS	ELDC LCC NELC WLDC	Ongoing
	TCA2 Develop innovative projects via the AONB Grant Schemes to support local businesses, communities and landowners.	LWCS	CL Defra ELDC LCC NELC WLDC	5 schemes supported per annum
	TCA3 (see also PA4) Continue to support, assist and promote a wide range of local community events, projects and voluntary activity.	CL LWCS TCV	ELDC LCC NELC WLDC	Ongoing
	TCA4 Promote and encourage, where appropriate, affordable housing schemes within the Wolds.	CL	ELDC LCC NELC WLDC	Ongoing
TCP2 To encourage measures to reverse the declines in rural services and facilities, and promote healthier lifestyles.	TCA5 Provide specialist advice and support to promote uptake of the various community grant schemes - Big Lottery Fund, local community grants etc.	CL ELDC LCC NELC WLDC	LWCS	Ongoing
	TCA6 Identify and promote fast broadband internet development appropriate to the AONB utilising various rural community broadband schemes.	LCC	ELDC NELC WLDC Internet service providers	Ongoing
	TCA7 (see also ARTA9) Support and promote local services via website links and 'Making the Most of' leaflet updates.	LWCS	Parish & Town Councils	Annual updates
	TCA8 Explore and develop links to the Lincolnshire Health and Well-being commissioning plans especially targets in respect of tackling obesity, physical activity and mental health.	ELDC LCC GLNP NELC WLDC	Lincolnshire Health & Well-being Board	Ongoing

TCP3 To encourage existing and new businesses to have a high regard for environmental sustainability and an active engagement in enhancing natural capital, especially in the context of the AONB.	TCA9 (see also FWA11-12 & ARTA14) All partners to help promote the positive benefits of the unique AONB landscape to the local business sector, including exploring opportunities for funding, sponsorship and active practical engagement, including volunteering.	JAC	Parish & Town Councils	Ongoing
	TCA10 (see also ARTA14) Seek to maximise opportunities for environmental gains via the AONB Grant Schemes, Lindsey Action Zone and the Rural Development Programme for England, including the post-Brexit Shared Prosperity Fund.	LWCS	LAZ LCC	Ongoing
TCP4 To sensitively utilise the Wolds as a recreational resource, in particular promoting accessible 'green infrastructure' close to communities within and adjacent to the AONB.	TCA11 (see also FWA12 & ARTA6) Influence and link with Green Infrastructure Strategic Plans to assist in the future development of multi-functional community green space.	ELDC LCC NELC WLDC	CLJPU LWT LWCS NE	Ongoing
	TCA12 (see also FWA12, ARTA6 & TWA8) Help to identify and support new community facilities and access, especially adjacent to settlements, utilising Local Nature Reserves, Local Wildlife and Geological Sites, woodland and community grant schemes.	LWCS Parish Councils	ELDC FC LCC LWT NELC WLDC	3 sites by 2023
	TCA13 (see also GA4) Continue to support and develop the God's Acre project to utilise the multiple benefits of the church and churchyard resource across the Wolds - including opportunities to link with the Citizen Science initiative.	CT LWCS	CCT GLNP LCC LWT PCCs Parish Councils	Ongoing

Theme 3: Discovering the Wolds

Interpretation – Awareness Raising (section 6.2)

Objective IO To raise the profile of the AONB through increasing visitors' and residents' enjoyment and understanding of its special qualities, in turn helping to support the local economy. (See also Sections 5.2 Thriving Communities, 6.3 Access, Recreation and Tourism and 7.2 Transport in the Wolds)				
Policies	Proposed Actions	Potential Lead Partners	Potential Others	Proposed Target
IP1 To provide visitors and residents with a greater understanding and appreciation of what makes the Lincolnshire Wolds a special place, encouraging interpretation facilities and services that can be utilised by all.	IPA1 Facilitate an interpretive walks and events programme across the Wolds linking with local partnership initiatives.	HL LCSP LWCS	ELDC LCC NELC RA WLDC	12 walks/ events per annum
	IPA2 Coordinate the production and distribution of the community focused AONB e-newsletter 'Higher Ground'.	LWCS	Community- groups CL JAC Parish Councils	4 e-news circulations per annum
	IPA3 Influence and utilise a wide range of partnership events, (e.g. Heritage Open Days, Wolds Words Festival and Church Festivals), to help celebrate the special qualities of the AONB.	ELDC LWCS HL WLDC	Parish Councils	Ongoing
IP2 To strengthen the profile of the AONB as a visitor destination by highlighting the area's unique landscape character and sense of place to the general public.	IPA4 Actively engage with businesses to help aid the review and mutual delivery of the Love Lincolnshire Wolds Destination Management Plan (Love Lincolnshire Wolds tourism group).	ELDC LLW LWCS WLDC	LCC Local businesses	Ongoing
	IPA5 (see also IPA7) Use range of local, regional and national press and publications to highlight the special qualities of Wolds.	LWCS	JAC NAAONB	4 postings per annum
	IPA6 Promote and develop further, the Wonders of the Wolds series and the Enjoy the Lincolnshire Wolds leaflet.	LWCS	ELDC LCC NELC WLDC	Ongoing
	IPA7 (see also IPA5) Work collaboratively with the National Association for AONBs and wider protected landscapes family (National Parks and Heritage Coasts) to promote the Lincolnshire Wolds - including utilising Outstanding Week.	LWCS	JAC NAAONB	Ongoing
	IPA8 (see also MA1) Highlight and celebrate the collective achievements of the AONB partnership through publication and distribution of an Annual Review to inspire further local action.	LWCS	JAC	1 per annum
IP3 To encourage residents and landowners to become actively involved in the interpretation and promotion of their area for visitors.	IPA9 (see also ARTA3) Encourage and support research and delivery of local community interpretation, supported by AONB Grant Schemes and other funding avenues.	CL HL LWCS	ELDC NELC LCC WLDC	3 by 2023

Access, Recreation and Tourism (section 6.3)

Objective ARTO To develop, promote and seek implementation of a wide range of sustainable access, recreation and tourism initiatives appropriate to the Lincolnshire Wolds AONB.				
Policies	Proposed Actions	Potential Lead Partners	Potential Others	Proposed Target
ARTP1 To maximise access opportunities for all visitors and residents of the AONB, improving provision for quiet recreation.	ARTA1 (see also TWA11) To advise and assist the Mid-Lincolnshire Local Access Forum (LAF) and Rights of Way Improvement Plan in respect of AONB objectives.	LCC NELC	JAC LAF LWCS	Ongoing
	ARTA2 Seek to ensure no net loss to the existing Definitive Public Rights of Way network and maximise opportunities for access for all via permissive arrangements.	LCC NELC RL	CLA LAF Landowners LWCS NFU	Ongoing
	ARTA3 (see also IPA9) Work with landowners, residents and local businesses to review, develop and promote further Wolds self-guided trails for walking and cycling.	LWCS	Landowners LCC Parish Councils HL	A further 3 new publications by 2023
	ARTA4 Work with partners to review and promote the Lincolnshire Wolds Cycle Routes, North Wolds and South Wolds Cycling Maps and other Wolds public transport maps.	LCC LWCS NELC	Local businesses Parish Councils	Ongoing
	ARTA5 Continue to support and promote the annual Lincolnshire Wolds Walking Festival, including reviewing funding and governance beyond 2018.	HL RL	LAZ LWCS Steering Group Volunteers	1 Festival per annum
	ARTA6 (see also TCA11-12) Seek to establish new multi-functional green space (including grassland and woodland) where possible close to main settlements and existing wildlife habitats.	LCC LWCS Parish Councils	CL FC Landowners Local businesses NE	3 sites by 2023
ARTP2 To provide coordinated, accurate and up-to-date information on the access, recreation and tourism opportunities within the Wolds AONB.	ARTA7 Regularly review and maintain visitor information via the Lincolnshire Wolds AONB website (www.lincswolds.org.uk), Love Lincolnshire Wolds (www.lovelincolnshirewolds.com), and Visit Lincolnshire websites (www.visitlincolnshire.com) including relevant signposting to tourist destination services.	LCC LWCS LLW	ELDC NELC WLDC	Ongoing
	ARTA8 (see also FWA13) Link with landowners and other interest groups to provide information on more specialist recreational activity, including opportunities for legal hunting, shooting and fishing.	CLA NFU	ELDC LCC LWCS NELC WLDC	Ongoing
	ARTA9 (see also TCA7) Maintain and update the 'Making the Most of' leaflet and webpage and utilise links with partnership websites including the Love Lincolnshire Wolds interactive portal.	LWCS LLW	ELDC NELC Parish & Town Councils WLDC	Ongoing

ARTP2 (cont.)	ARTA10 Work with the National Association for AONBs on promotional initiatives using combination of local and national branding, including relevant coordinated promotions through social media channels.	NAAONB LWCS	JAC	Ongoing
ARTP3 To develop joint promotion and marketing initiatives to raise the profile of the AONB, including utilising the surrounding market towns as gateways to the Lincolnshire Wolds.	ARTA11 Jointly promote the Wolds through collaborative visitor guides and marketing schemes including connections via the Love Lincolnshire Wolds network.	LCC LLW LWCS NELC	ELDC WLDC Town Councils	Ongoing
	ARTA12 Explore further opportunities to develop and promote the Wolds Gateway Walks series and cycle routes.	LWCS	ELDC LCC LNT NELC WLDC	Ongoing
	ARTA13 Support and assist market towns in working towards Walkers are Welcome status and maintaining the award once achieved.	LCC	ELDC LWCS NELC RL WLDC	Ongoing
	ARTA14 (see also FWA12 & TCA10) Explore common links with the Greater Lincolnshire Local Enterprise Partnership and Greater Lincolnshire Nature Partnership to enhance the visitor experience and support the local economy through green tourism.	LCC	CLA ELDC LWCS NELC NFU WLDC	Ongoing
ARTP4 To review current access, recreation and tourism provision and support new measures and good practice to improve the infrastructure where compatible with the AONB.	ARTA15 Continue to enhance baseline information on visitor numbers, profiles and distribution across the AONB.	LCC	ELDC LWCS NELC WLDC	Ongoing
	ARTA16 Encourage and support more access, recreational and tourism studies, especially to supply information on local visitor experiences and specialised interest groups.	LCC	ELDC GLNP LWCS NELC WLDC	By 2020
	ARTA17 (see also TWA7) Promote and support the Lindsey Trail horse carriage route for both specialist and general use.	LCC	BDS BHS LAF Landowners LWCS	Ongoing
	ARTA18 (see also TCA12 & TWA8) Resources permitting, explore provision for appropriate and sensitively planned car parking and viewing points in consultation with relevant landowners, highway authorities and community groups.	LCC NELC Parish Councils	ELDC LWCS WLDC	Ongoing
	ARTA19 Engage with the local Disability Access Forum and other relevant contacts to review and explore future countryside access provision for hard to reach groups - including those with potential mobility or other specialist health issues.	LCC	ELDC LWCS NELC WLDC	By 2020

Theme 4: Developing the Wolds

Planning and Development Management (section 7.1)

Objective PO To seek to ensure that development plans and planning guidance consistently recognise and uphold the primary purpose of the Lincolnshire Wolds AONB designation – the protection and enhancement of its natural beauty and special character. (See also Sections 4.4.2 Built Heritage and 5 Living and Working in the Wolds)				
Policies	Proposed Actions	Potential Lead Partners	Potential Others	Proposed Target
PP1 To protect and enhance local character and distinctiveness through the highest quality of design in new development and re-development, including making space for biodiversity, being sensitive to the considerations of heritage assets and tackling climate change.	PA1 Comment on significant planning applications or those likely to set a precedent on sites within and adjacent to the AONB.	LWCS NE	CLLPT CPRE ELDC LCC NELC WLDC	Ongoing
	PA2 (see also BHA2 & TCA1) Encourage and support the production and use of Parish and Neighbourhood Plans, recognising and reinforcing local character and distinctiveness in design.	CLJPU CPRE ELDC LCC NELC WLDC	CL HE LWCS NE Parish Councils	Ongoing
PP2 To encourage and support the sensitive conversion of traditional buildings to new viable uses to support the local economy and community, including making space for biodiversity and tackling climate change.	PA3 Develop wider partnership interest in the development of a tailored design guide to help aid future high quality development in the AONB.	CLJPU ELDC LCC NELC WLDC	HE LWCS NE Parish Councils	By 2020
PP3 To support the development of local needs/affordable housing provision which is appropriate to local character and consistent with AONB objectives and LA planning policies.	PA4 (see also TCA3) Support the work of local authorities and housing associations in AONB communities.	CL	CLLPT ELDC LCC LWCS NELC WLDC	Ongoing
PP4 To minimise damage to the AONB's landscape and natural beauty as a result of mineral working and associated activity and help implement the Lincolnshire Geodiversity Strategy.	PA5 Comment on potentially significant mineral application proposals likely to impact upon the AONB.	LWCS NE	CLLPT CPRE ELDC LCC NELC WLDC	Ongoing
	PA6 Provide specialist advice and support for landscape restoration and alternative uses following the cessation of mineral extraction.	LWCS NE	CLLPT CPRE ELDC LCC NELC WLDC	Ongoing
PP5 To promote awareness and encourage consideration of the impact of adjacent development on the views to and from the AONB.	PA7 Continue to liaise with planning authorities and relevant companies regarding those developments adjacent and visible from the Wolds that may impact upon the setting of the AONB.	LWCS NE	CLLPT CPRE ELDC LCC NELC WLDC	Ongoing

PP6 To recognise and protect the AONB night skies and general tranquillity through ensuring future development minimises impact upon light and noise levels.	PA8 Raise awareness and continue to review the baseline data for tranquillity and dark night skies across the Wolds.	CPRE LWCS NE	CLLPT Defra ELDC LCC NELC WLDC	Ongoing
	PA9 Liaise with planning authorities and relevant developers regarding proposals that may impact upon general high levels of tranquillity and night skies.	CPRE LWCS NE	CLLPT ELDC LCC NELC WLDC	Ongoing
PP7 To ensure a general presumption against wind energy schemes in any location which would cause significant and demonstrably detrimental effects upon the natural beauty and intrinsic characteristics of the AONB.	PA10 Seek to influence Local Development Frameworks (Local Plans) to recommend the general presumption against wind energy schemes likely to have a significant impact upon the AONB.	LWCS JAC NE	CLLPT CPRE ELDC LCC NELC WLDC	Ongoing
	PA11 To provide specialist comments on any wind farm/turbine applications to the relevant planning authority on a case by case basis, reviewing accompanying reports as relevant, but especially Landscape and Visual Assessment Studies (LVIA's) and wider Environmental Assessments (EA's).	LWCS NE	CLLPT CPRE ELDC LCC NELC WLDC	Ongoing
PP8 To support general waste reduction measures and recycling initiatives that are in accordance with the special requirements of the AONB and help the shift towards a circular economy.	PA12 To advise and assist the Lincolnshire Waste Partnership in respect of AONB objectives.	LCC LWCS NE NELC	CLLPT CPRE ELDC WLDC	Ongoing
	PA13 Seek to encourage innovative community-led waste reduction, management and recycling projects.	LCC NELC	CLLPT CPRE ELDC LWCS NE WLDC	Ongoing
PP9 To ensure that where larger scale development must proceed within or adjacent to the AONB, because of other national interests, the highest regard is placed on minimising any impacts upon the primary purpose of the designation – the area's natural beauty.	PA14 Provide specialist comments on any large scale development on a case by case basis, reviewing accompanying reports as relevant, but especially any accompanying LVIA's and EA's.	LWCS NE	CLLPT CPRE ELDC LCC NELC WLDC	Ongoing
	PA15 In consultation with all statutory agencies, relevant local planning authorities and local communities investigate the options for a formal Lincolnshire Wolds AONB boundary review.	Defra JAC NE	CLLPT ELDC LCC NAAONB NLC NELC WLDC	By 2020
PP10 (see also Policy CCP4) To develop a comprehensive assessment approach to securing opportunities for renewable energy provision across the AONB and its wider setting.	PA16 Explore and encourage innovative sustainable energy projects that are compatible with the special landscape qualities of the AONB.	CLLPT ELDC LCC NELC WLDC	LWCS	Ongoing

Transport in the Wolds (section 7.2)

Objective TWO To encourage and support the development and promotion of a sustainable and fully integrated transport network which respects the AONB landscape and character, and addresses local community and visitor needs.				
Policies	Proposed Actions	Potential Lead Partners	Potential Others	Proposed Target
TWP1 To encourage integrated public and community-based transport schemes that can help to improve the links between communities within the AONB and the surrounding market towns.	TWA1 (as CCA8) Explore and support a programme of partnership activity to encourage public transport and community transport initiatives including shared bus schemes.	Bus operators LCC NELC	ELDC LWCS NELC Parish - Councils RL WLDC	By 2020
	TWA2 Maximise public transport opportunities when organising and promoting events and walks.	HL LWCS RL	ELDC NELC Parish Councils WLDC	12 events by 2023
	TWA3 Review and influence future Local Transport Plans and Transport Strategies supporting sustainable transport solutions.	LCC NELC	ELDC LWCS Parish Councils WLDC	As required
TWP2 To support and encourage traffic management that will promote safe and attractive walking, cycling and riding in the AONB.	TWA4 Review and update the InterConnect Bus Walk Series using Lincoln - Skegness & Lincoln - Grimsby services.	LCC NELC Stage Coach	ELDC LWCS Parish Councils WLDC	Refreshed routes in place by 2020
	TWA5 In consultation with local landowners and communities, promote and encourage safe walking, cycling and riding routes across the AONB, with an emphasis on community led/supported trails.	LCC LWCS NELC Parish Councils	CLA Landowners LCC NELC	5 new or updated routes by 2023
TWP3 To encourage transport infrastructure improvements to support appropriate tourism development, ensuring schemes are sympathetic to the landscape and character of the AONB.	TWA6 Work with local businesses and communities to explore and encourage development of cycle hire and bike loan schemes.	LAZ LCC NELC	ELDC LWCS WLDC	Ongoing
	TWA7 (see also ARTA17) Encourage appropriate equestrian tourism, including opportunities from the Lindsey Trail horse carriage route.	LCC LAZ	CLA ELDC LWCS NELC WLDC	Ongoing
	TWA8 (see also TCA12 & ARTA18) Work with landowners and local communities to identify and establish suitable and appropriate small scale car parking facilities for local and visitor use.	Parish Councils	ELDC Landowners LCC LWCS NELC WLDC	Ongoing

TWP4 To encourage a consistent approach to the use of road signage, furniture, and maintenance to promote and respect the character of the AONB.	TWA9 Seek to ensure that any road improvements are of a design and scale that will minimise their impact upon the landscape and character of the AONB.	LCC NELC	ELDC LWCS WLDC	When required
	TWA10 Continue to support, promote and develop the Traditional Roadsigns in Lincolnshire Project to enhance historic signage across the AONB.	LCC LWCS NELC	HL Local volunteers Parish Councils	Ongoing
TWP5 To support and encourage the development of an integrated and well-maintained public rights of way network, maximising the opportunities for achieving access for all.	TWA11 (see also ARTA1) Advise and assist Mid-Lincolnshire Access Forum and Rights of Way Improvement Plans in respect of AONB objectives.	LCC NELC	JAC LAF LWCS	Ongoing
	TWA12 Engage positively to help support and promote permissive and official public rights of way improvements to help enhance the network.	LCC NELC	JAC LAF LWCS	When required
TWP6 To encourage the Highway Authorities to adopt traffic management measures and schemes commensurate with AONB designation and rural environments.	TWA13 Liaise with highway authorities to minimise the urbanisation of country and village roads in the AONB – utilising Streets for All and similar guidance.	LCC NELC	LWCS Parish Councils	Ongoing

Climate Change and Energy (section 7.3)

Objective CCO To seek to develop and implement a long-term climate change strategy to help safeguard the Lincolnshire Wolds AONB, recognising and responding to the key local pressures through effective adaptation and mitigation.				
Policies	Proposed Actions	Potential Lead Partners	Potential Others	Proposed Target
CCP1 To establish, monitor and review key indices for monitoring the possible effects of climate change.	CCA1 Review and utilise research and monitoring for environmental/landscape resources linking with proposed actions.	GLNP JAC	EA LWCS	Ongoing
CCP2 To develop practices that promote a sustainable landscape approach to tackle and respond to climate change pressures through a range of mitigation and adaptation measures.	CCA2 Research, encourage and support landscape-scale enhancements linking with proposed actions.	GLNP JAC	EA LWCS	Ongoing
	CCA3 (see also CCA5) Research, support and encourage changes to land management practices to help aid the AONB's resilience to climate change impacts.	FC NE	EA LWCS GLNP	Ongoing
CCP3 To support and develop practices that promote healthy, well-connected and managed landscapes and ecosystems resilient and flexible to the effects of climate change.	CCA4 Explore opportunities for landscape-scale habitat restoration via HLF and other strategic grant funded packages.	LWCS Defra	EA LCC JAC NE NELC	Ongoing
	CCA5 (see also CCA3) Encourage and support landscape-scale habitat enhancements that can provide economic, social and environmental benefits.	GLNP JAC	EA LWCS NE	Ongoing
CCP4 (see also PP10) To encourage and promote innovative low carbon energy reduction/generation schemes that are conducive to the requirements of the AONB designation and complement local landscape character.	CCA6 (see also BHA8 & TWA1-3) To raise awareness of the benefits of carbon reduction plans for organisations, local communities and businesses active across the AONB.	LCC NELC	CL JAC Local businesses	Ongoing
	CCA7 Support low carbon micro-energy generation schemes and community energy reduction measures that are in-keeping with the special qualities of the nationally protected AONB.	JAC LCC NELC	CL ELDC Local businesses WLDC	Ongoing
	CCA8 (as TWA1) Explore and support a programme of partnership activity to encourage public transport and community transport initiatives.	Bus operators LCC NELC	ELDC LWCS NELC RL WLDC	Ongoing

Monitoring (section 9.2)

Objective MO To monitor the Management Plan activities and condition of the Lincolnshire Wolds AONB				
Policies	Proposed Actions	Potential Lead Partners	Potential Others	Proposed Target
MP1 To monitor the performance of the Action Plan.	MA1 Collate, report and review information against annual work programmes for LWCS and JAC partners.	JAC LWCS	GLNP	Annually
	MA2 (see also IPA8) Utilise electronic reporting tools to support and encourage returns from all partners.	JAC LWCS	GLNP Parish Councils	Annually
MP2 To monitor the condition of the AONB.	MA3 (see also AA10) Continue to develop the Wolds AONB baseline evidence for key condition indicators - linking with key national protected landscapes monitoring datasets.	LWCS	Defra EA NE All LAs	Ongoing
	MA4 Actively engage with the NAAONB key performance reporting for the headline indicators: Landscapes for Nature, Landscapes for People, Landscapes for Culture and Landscapes for Business.	LWCS	NAAONB	Annually

9.2 Monitoring

The publication of the revised Plan is not the end of the process but marks a continuous commitment to manage the Lincolnshire Wolds AONB. Monitoring both the condition of the AONB and the implementation of the Plan will be essential if we are to assess its success.

The previous evidence bases for the area have been fairly limited, with datasets usually available at either the administrative boundaries (parish council, electoral wards, district/unitary and county levels) or the more extensive Lincolnshire Wolds Character Area. The volume of AONB specific data has been more abundant since 2005 with assistance from the Lincolnshire Environmental Records Centre and nationally via the Monitoring Environmental Outcomes in Protected Landscapes (MEOPL) project. However there is still a tendency for most information to be gathered at an administrative level; with further time and resources usually required to refine to the AONB boundary, with estimates and interpretation of information often necessary. A sound and robust evidence-base remains essential for making informed strategic decisions and ensuring the best use of limited resources to protect and enhance the area.

9.2.1 Condition Monitoring

A variety of 'condition indicators' have been identified in the accompanying State of the AONB Report 2017. These have been selected from a nationally recommended list of monitoring indicators recommended by Natural England and will enable comparisons with similar areas on a regional and national scale. The indicators will help to develop and refine baseline data over the following areas: countryside and landcover; cultural and vernacular; ecology and environment; and socio-economic and quality of life themes.

9.2.2 Performance Monitoring

Performance monitoring is necessary to monitor progress of the Plan. A more detailed annual work programme will be established from the five-year Action Plan for both the Lincolnshire Wolds JAC and LWCS. These will be reviewed annually, reporting progress on specific actions and identifying where additional resources may be required.

Objective:

MO To monitor the Management Plan activities and condition of the Lincolnshire Wolds AONB.

Policies:

MP1 To monitor the performance of the Action Plan.

MP2 To monitor the condition of the AONB.

Actions: See MA1-4 on Table 3



Monitoring all aspects of the AONB

Table 4: Monitoring Indicators & Summary Findings (section 9.2.3)

See also Appendix 4 - State of the AONB Report 2017

Indicator	Description	Summary findings
Protecting the Wolds (Theme 1) – Landscape, Natural Heritage & Biodiversity		
Landscape		
1	To review the fixed point photographs established across the AONB as a proxy measure for monitoring changes to key viewpoints and local character.	Under review
2	The investment and length of powerlines undergrounded since 2004 within the AONB.	Northern Power – 13kms undergrounded with an investment of £1.7 million. (2016) Western Power – 12 kms undergrounded with an investment of £1.2 million. (2016)
3	A visual tranquillity map of the Lincolnshire Wolds AONB.	See relevant map p112 – State of the AONB Report
4	A dark night skies map of the Lincolnshire Wolds.	See relevant map p113 – State of the AONB Report
Nature Conservation		
5	UK BAP Species present within the Lincolnshire Wolds AONB.	165 species from known records. (2017)
6	Red List Species present within the Lincolnshire Wolds AONB.	244 species from known records. (2017)
7	Lincolnshire BAP Species present within the Lincolnshire Wolds AONB.	41 species from known records. (2017)
8	Condition of SSSIs within the Lincolnshire Wolds AONB.	50% (52 hectares) of SSSIs are in favourable condition. (2016)
Woodland Resource		
9	Area of ancient and semi-natural woodland the AONB.	604 hectares recorded as ancient woodland. (2017)
10	Area of the AONB's woodland in positive management	At least 56% of woodland in positive management. (2015)
11	Uptake of Woodland Managed and Created Under Environmental Stewardship (ES).	234.79 hectares of total woodland was managed and/or created via Environmental Stewardship - 18 agreements. (2017)
Grassland Resource		
12	Uptake of Low input Grassland, Managed, Restored or Created Under Environmental Stewardship (ES)	1883.22 hectares of low input grassland created, managed and/or restored. (2017)
13	Number, length and condition of Roadside Nature Reserves	17 Roadside Nature Reserves - condition info pending. (2017)
Rivers and streams resource		
14	The length of river in moderate or good ecological condition.	89.28 kms of main river was classified as being in moderate or good condition. (2017)
15	The length of Lincolnshire Chalk Streams and their adjacent habitat restored through active management.	Since 2006 over 26 kms of chalk stream restored, with management enhancements to a further 45 kms of adjacent habitat. (2016)
Land Management		
16	Number and area of land in formal stewardship agreements.	31,990 hectares (57%) of the AONB in Environmental Stewardship with 136 live agreements with an investment of £2.17 million. (2017)
17	Environmental Stewardship (ES Options) number and area.	See relevant table in State of the AONB report 2017.

Soils and Earth Heritage		
18	Area of the Lincolnshire Wolds retaining good soil structure and nutrient content for sustainable productive farming (or the area of the Lincolnshire Wolds providing high grade agricultural land).	25 soil types identified across the AONB - series of vulnerability maps produced in 2009 now in need of renewal.
19	Condition of registered SSSI geological sites	Six SSSIs sites all in favourable condition. (2017)
20	% of Local Geological Sites and Regionally Important Geological and Geomorphological Sites (RIGS) that are in favourable condition.	15 LGS sites and a further 6 RIGS – condition to be confirmed (2017)
Cultural Heritage – Archaeology and Built Heritage		
21	Condition of heritage assets deemed to be 'At Risk'.	27.6 % of Scheduled Monuments and 5.9% of Grade II* buildings are deemed to be at risk. One place of worship (Grade II*) is also at risk. (2017)
22	The number of Traditional Roadsigns in Lincolnshire (TRiL) within the AONB in good condition.	89 TRiLs within the AONB, 95% estimated to be in good condition. (2017)
23	The number of AONB traditional farmsteads deemed to have "high heritage potential".	568 traditional farmsteads have been identified in the AONB; 48% are deemed to have heritage potential on account of 50%+ retention of historic buildings. (2017)
Living and Working in the Wolds (Theme 2)		
24	Population patterns in the AONB and adjacent market towns.	19% under 19 years, 21% 20-44, 26% 45-59, 25% 60-74 and 9% over 75 years. (2011)
25	Number of rateable businesses in the Lincolnshire Wolds AONB.	375 rateable businesses. (2017)
26	Employment levels in the Lincolnshire Wolds.	4,890 people currently employed in the Wolds (2017); unemployment currently approx. 5%
27	Business activity in the Lincolnshire Wolds AONB.	The rateable businesses (2017) include: 70 workshops, 54 warehouses, 52 guest houses etc, 27 comm's stations, 21 shops/showrooms, 20 pubs, 14 offices, 12 equestrian facilities.
28	Access to basic services.	See table p125 - LWCS audit (2017)
29	The annual average daily traffic flow (AADT) range for Lincolnshire Wolds A and B roads.	In 2016 the mean AADT from A road counts was 7,313 vehicles; 2,078 for B roads.
30	Public transport services	Under review
31	Broadband/Mobile Phone Coverage	Under review
32	Farm Types - Lincolnshire Wolds AONB	64% of farms are in cereals or general cropping, 18% livestock grazing. (2013)
33	Farm Sizes Classification	Over 53% of farms are over 100 hectares. (2013)
34	Land Use in hectares (% listings in respect of the total area of the AONB)	Over 76% of AONB was in cropping or bare fallow, 11% in permanent grassland and 3.2% as registered woodland. (2013)
35	Breakdown of Farm Labour (number of personnel)	798 people were in agricultural sector employment – 52% full-time. (2013)
36	Additional Rural Development Programme for England (RDPE) and LEADER investment in landowner, business and community partnership projects across the Lincolnshire Wolds.	Between 2014–16, four farming/forestry projects completed utilising RDPE Countryside Productivity small grants programme. £451,273 of Leader grants was approved in support of seven projects in the AONB pre-2014. Schemes continue to come forward under the new programme.
Discovering the Wolds (Theme 3)		
37	The total number of visitors to the wider Lincolnshire Wolds Destination Plan Area.	In 2016 over 3.4 million visitors visited. (2017 STEAM data)
38	The total number of day and staying visitors to the Lincolnshire Wolds Destination Plan Area.	In 2016 there were 3.18 million day visitors and 250,000+ staying visitors. (2017 STEAM data)

39	The estimated economic contribution from tourism across the Lincolnshire Wolds Destination Plan Area.	In 2016 the economic contribution from tourism to the area is in excess of £166.5 million. (2017 STEAM data)
40	Number and condition of gateway road signs for the Lincolnshire Wolds	20 boundary signs originally installed in 2001 – one missing, one moved. JAC has deemed to renew any future damaged signs on a like-for-like basis. (2016 audit)
41	Number of Promoted Circular Walking Routes	Over 37 promoted walks available as "Wolds Walks" or "Gateway Walks". Further 11 Interconnect Bus Walks available. (2017)
42	Number of Long Distance Trails	Five long distance routes take in the AONB including The Viking Way. (2017)
43	Number of special feature maps and leaflets.	Five special feature leaflets (Wonders of...) available promoting AONB's points of interest + other specific leaflets inc. Making the Most of, Enjoy the... (2017)
44	Number of AONB specific interpretation panels	Seven panels were renewed in 2014-15. 11 panels were renewed in 2015-16. Four panels were renewed in 2017-18.
45	Number of people engaged in AONB activity through guided walks, events, shows and volunteering.	During 2016-17 over 11,250 people were actively engaged via AONB walks, events, shows and volunteering. (2017)
46	Number of visits to the Wolds AONB website.	During 2016-17 the LWCS's dedicated AONB website was visited 57,749 times, > 79% were first time visitors. (2017)
47	Google Maps Rating for the Lincolnshire Wolds AONB.	449 independent postings - average score four and a half out of five. (2017)
48	Trip Advisor Rating for the Lincolnshire Wolds AONB.	63 independent postings - average score five out of five. (2017)
Developing the Wolds (Theme 4)		
49	Total investment and projects supported via the Wolds AONB Partnership's Sustainable Development Fund (SDF) and Small Grants Scheme (SGS) to aid delivery of wide range of goods and services.	Since April 2013 the SDF and SGS programmes have supported 78 projects across the Wolds with an investment of £106,987 securing match funding of £126,611.
50	Number of neighbourhood plans	None for any AONB settlements
51	Number of local design guides	Older guides exist e.g. Tealby
52	Number of new affordable homes	under review
53	Number of new flood management schemes to aid water management and /climate change adaptations	New flood alleviation scheme constructed on the River Lud, helping to protect Louth.
54	Number of planning applications or appeals approved contrary to the advice of the LWCS and NE	New measure proposed for monitoring from May 2018. (Note LWCS comments on a wide range of planning applications that may impact upon the AONB).
Partnerships in the Wolds (Theme 5)		
55	The LWCS will compile and publish an annual review summarising activities undertaken.	13 th Wolds AONB Annual Review 2016-17 published and circulated. (2017)
56	All JAC partners will complete annual updates against key M. Plan policies and objectives as detailed within the five year indicative Action Plan.	Last recording request April 2017.
57	The key local authorities will review and sign a local Memorandum of Agreement (MoA) to help ensure continuing financial support.	Local MoA recently signed and in place until spring 2020.
58	The JAC will continue to support, influence and promote the wider family of AONBs – primarily via the work of the National Association for AONBs (NAAONB), under the Landscapes for Life banner.	Attendance at Chairman's Conference (autumn 2017); active participation in the NAAONB Strategic Business Plan review.

9.3 Management Plan Review

In addition to the annual review of the Action Plan, the CRoW Act legislation requires that AONB Management Plans be reviewed at regular five year intervals. A formal review of the Plan will commence during 2022 to enable effective participation and consultation with partners and stakeholders.

Appendix 1: Lincolnshire Wolds Joint Advisory Committee (JAC) Membership

Membership as of March 2018

Joint Management Group
Natural England (NE) - <i>statutory advisor</i>
Lincolnshire County Council (LCC) - <i>core funder</i>
East Lindsey District Council (ELDC) - <i>core funder</i>
West Lindsey District Council (WLDC) - <i>core funder</i>
North East Lincolnshire Council (NELC) - <i>core funder</i>
Other Members:
Campaign to Protect Rural England (CPRE)
Churches Together (CT)
Community Lincs (CL)
Country Land and Business Association (CLA)
Historic England (HE)
Environment Agency (EA)
Forestry Commission (FC)
Heritage Lincolnshire (HL)
Lincolnshire Wildlife Trust (LWT)
National Farmers Union – East Midlands (NFU)
National Trust (NT)
Ramblers - Lincolnshire (RL)
The Conservation Volunteers (TCV)
Advisory Members:
Department for Environment Food and Rural Affairs (Defra) - core funder under the terms of the national AONB's funding settlement.

The following Appendices are available via www.lincswolds.org.uk/looking-after/lincolnshire-wolds-aonb-management-plan

- Appendix 2 Role of the Joint Advisory Committee, the Lincolnshire Wolds Countryside Service and sub-groups
- Appendix 3 Local Landscape Character Areas
- Appendix 4 Lincolnshire Wolds State of AONB Report 2017
- Appendix 5 Public Questionnaire - Have Your Say (2016); Results Summary
- Appendix 6 AONB Partnership Peer Review – A summary of Responses
- Appendix 7a Public Consultation Proforma - 2017
- Appendix 7b Summary of Written Responses to Public Consultation

Appendix 8a – Glossary for Acronyms

AONB	Area of Outstanding Natural Beauty
AMP5	Asset Management Plan (2010-2015) for private water companies
AW	Anglian Water
BAP	Biodiversity Action Plan
BDS	British Driving Society
BeC	Beech Clumps
BHS	British Horse Society
CAMS	Catchment Abstraction Management Strategy
CAP	Common Agricultural Policy
CCT	Churches Conservation Trust
CFE	Campaign for the Farmed Environment
CG	Common Ground
CL	Community Lincs
CLA	Country Land and Business Association
CLLPT	Central Lincolnshire Local Plan Team
COSMIC	Conservation of Scheduled Monuments in Cultivation
CPRE	Campaign to Protect Rural England
CRoW Act	Countryside and Rights of Way Act 2000
CSF	Catchment Sensitive Farming
CSS	Countryside Stewardship Scheme
CT	Churches Together
Defra	Department for Environment, Food and Rural Affairs
DMV	Deserted Medieval Village
EA	Environment Agency
EA's	Environmental Assessments
EoEAO	East of England Apples and Orchard Project
EIA	Environmental Impact Assessment
ELDC	East Lindsey District Council
ELS	Entry Level Stewardship
ENPAA	English National Park Authorities Association
EU	European Union
FC	Forestry Commission
GL	Groundwork Lincolnshire
GLLEP	Greater Lincolnshire Local Economic Partnership
GLNP	Greater Lincolnshire Nature Partnership
GM	Genetically Modified
GVA	Gross Value Added
HAP	Habitat Action Plan
HaR	Heritage at Risk
HE	Historic England
HHT	Hubbard's Hills Trust
HL	Heritage Lincolnshire
HLS	Higher Level Stewardship
HWG	Heritage Working Group (Lincolnshire Wolds)
IDB	Internal Drainage Board
ICT	Information and Communications Technology
IUCN	International Union for Conservation of Nature and Natural Resources
JAC	Joint Advisory Committee (AONB Partnership)
JMG	Joint Management Group (of JAC)
LA	Local Authority
LAF	Local Access Forum (Mid-Lincolnshire)
LAZ	Lindsey Action Zone
LBP	Lincolnshire Biodiversity Partnership
LBAP	Lincolnshire Biodiversity Action Plan
LCC	Lincolnshire County Council
LCSP	Lincolnshire Chalk Streams Project
LDF	Local Development Frameworks
LEAF	Linking Environment and Farming Network

LERAP	Local Environment Risk Assessment for Pesticides
LERC	Lincolnshire Environmental Records Centre
LGG	Lincolnshire Geodiversity Group
LGS	Local Geological Site
LLW	Love Lincolnshire Wolds
LNR	Local Nature Reserve
LNS	Lincolnshire Nature Strategy
LNT	Louth Navigation Trust
LNU	Lincolnshire Naturalists Union
LRO	Lincolnshire Research Observatory
LTC	Louth Town Council
LTP	Local Transport Plan
LVIA	Landscape and Visual Impact Assessment
LWCS	Lincolnshire Wolds Countryside Service (AONB staffing unit)
LWS	Local Wildlife Site
LWT	Lincolnshire Wildlife Trust
LWWF	Lincolnshire Wolds Walking Festival
MapInfo	Map Information System (computerised)
MEOPL	Monitoring Environmental Outcomes in Protected Landscapes
NAAONB	National Association for Areas of Outstanding Natural Beauty
NE	Natural England
NELC	North East Lincolnshire Council
NFU	National Farmers Union
NO	Nitrogen Monoxide
NPAC Act	National Parks and Access to the Countryside Act 1949
NPPF	National Planning Policy Framework
OFGEM	Office of Gas and Electricity Markets
OWG	Officers Working Group (of JAC)
PAWS	Plantations on Ancient Woodland Sites
PCC	Parochial Church Council
PPG	Planning Policy Guidance
PTES	People's Trust for Endangered Species
RA	Ramblers
RDPE	Rural Development Programme for England
RDS	Rural Development Service
RES	Regional Economic Strategy
RFF	Regional Forestry Framework
RIGS	Regionally Important Geological/Geomorphological Site
RNR	Roadside Nature Reserve
RoWIP	Rights of Way Improvement Plan
RTP	Rural Transport Plan
RTPO	Rural Transport Partnership Officer
SDF	Sustainable Development Fund
SE	Sport England
SM	Scheduled Monument
SNCI	Site of Nature Conservation Importance
SO	Sulphur Monoxide
SPD	Supplementary Planning Documents
SPG	Supplementary Planning Guidance
SSSI	Site of Special Scientific Interest
TCV	The Conservation Volunteers
TPO	Tree Preservation Order
TRIL	Traditional Roadsigns in Lincolnshire
WFD	Water Framework Directive
WLDC	West Lindsey District Council
WTT	Wild Trout Trust

Appendix 8b: Technical Terms

Acute Oak Decline	Acute oak decline (AOD) is a condition usually affecting mature oak trees and is believed to be caused by a bacterium, although often exacerbated by beetle infestations.
Agri-environment Scheme	Land-based schemes that provide financial incentives for land managers to adopt environmentally beneficial land management practices.
Ancient woodland	A site that has had continuous woodland cover since at least 1600AD and which has not been cleared or replanted (except natural regeneration).
Barrows	An ancient mound associated with burials.
Biodiversity	The variety of life on Earth, coined from the Rio de Janeiro Earth Summit of 1992.
Brownfield land	A planning term to indicate land that has been previously developed e.g. redundant airfield sites, industrial premises etc.
Calcareous	An area of ground that is rich in calcium carbonate (lime) and is therefore chalky. It supports specific vegetation types.
Carbon sequestration	The natural or artificial processes by which carbon dioxide is captured and removed from the atmosphere and stored in a carbon sink.
Carbon sink	A natural or artificial reservoir that absorbs and locks more carbon than it releases.
Climate change adaptation	A response that seeks to reduce the vulnerability of biological systems to climate change effects.
Chalara	A serious disease of ash trees caused by the fungus <i>Hymenoscyphus pseudoalbidus</i> .
Circular economy	Using restoration and recovery techniques to reuse products, components and materials; maximising their use and minimising harmful impacts upon the wider environment through reducing energy, waste and the need for raw materials.
Climate change mitigation	A response that seeks to reduce the greenhouse gas emissions and/or enhance the removal of these gases from the atmosphere.
Combes	Steep incised valleys formed by glaciation processes.
Coppice	To cut, at ground level, all stems of trees/shrubs to stimulate new, multi-stemmed growth. Also refers to an area that has been managed in this way.
Diversification (farm)	To vary and expand the type of operations within a farm business, e.g. supplement farm income by other enterprises.
DMV – deserted medieval village	An abandoned settlement that dates from the Middle Ages.
Drovers roads	Routes that were used to move flocks and herds between grazing pastures, markets and settlements.
Ecosystem services	A concept developed to aid our understanding of the human uses and management of natural resources including their supporting, provisioning, regulating and cultural functions.
Escarpment	A long steep slope at the edge of a plateau.
Geomorphology	The physical features of the surface of the earth, such as rivers, valleys etc.
Glacial and Periglacial activity	The landscape features created by the presence of, and by adjoining, ice sheets in the past glaciations.
GI – Green Infrastructure	A strategically planned and delivered network of high quality green space that provides multiple benefits for biodiversity, access, recreation and resource protection.
Hedge laying	To cut and lay stems of a hedge in such a way that it will regenerate and continue to grow.
Higher Tier Stewardship	Multi-year Countryside stewardship agreements for environmentally significant sites, commons and woodlands where more complex management requires support from NE and/or the FC, and include a range of year-round options and capital items.
Interpretation	The art of communicating the significance of places and features.
Landmark trees	Individual and small clumps of trees that are conspicuous within the landscape and add to its distinctive character – this can also be via local cultural significance.
Lincolnshire Nature Strategy	The document, previously known as the Biodiversity Action Plan that ensures everyone can help protect and enhance the biodiversity of Lincolnshire through a series of achievable actions.
Mid Tier Stewardship	Multi-year Countryside stewardship agreements for environmental improvements in the wider countryside that include a range of year round options and capital items.
Natural capital	Those elements of the natural environment that provide valuable goods and services to people, such as the stock of forests, water, land and sea.
Nucleated	A village or settlement with a strong central core.
Pollard	To cut, at 3-4 metres above ground level, branches of a tree to stimulate new, multi-stemmed growth out of the reach of browsing animals.
RNR - Roadside Nature Reserves	A verge that is deemed worthy of protection because of its botanical interest, and actively managed between the Lincolnshire Wildlife Trust and Lincolnshire County Council, (previously classified as Protected Roadside Verges).
Socio-economic	The interaction of social and economic factors.
SMV – shrunken medieval village	A settlement much reduced in size from the Middle Ages.
Statutory undertaker	An organisation, required by law, to undertake certain duties, e.g. public utilities companies.
Sustainable	Ensuring social, economic and environmental needs can be met without depletion of natural resources.
Synergy	Interaction and co-operation of individuals and organisations to work more effectively.

The following Appendices are available via
www.lincswolds.org.uk/looking-after/lincolnshire-wolds-aonb-management-plan

Appendix 9 Key Related Plans, Strategies and Initiatives

Appendix 10 Bibliography/Further Information

Appendix 11: Acknowledgements

The Lincolnshire Wolds Countryside Service would like to thank all individuals who took the time and trouble to respond during the initial questionnaire survey and also those who met and spoke to us directly during our summer events. We also appreciate and thank everyone for the comments and suggestions that were received during the formal public consultation. (see Appendix 7b)

In addition, the following individuals and organisations have provided regular support and input to enable the collaborative development of the Management Plan and accompanying State of the AONB Report.

Lincolnshire Wolds Joint Advisory Committee Membership as at March 31st 2018:

Tim Allen	Historic England
Katy Anderson	Country Land and Business Association
Cllr Richard Avison (Vice Chair)	East Lindsey District Council
Andy Bailey	Environment Agency
Liz Bates	Heritage Lincolnshire
Sara Blair-Manning	National Trust
Paul Chaplin	North East Lincolnshire Council
Janet Clark	Community Lincs
Cllr Iain Colquhoun	North East Lincolnshire Council
Charles Dobson	National Farmers Union
Roger Douglas	Country Land and Business Association
Rob Gornall	Natural England
Cllr Adam Grist	East Lindsey District Council
Sean Kent	Lincolnshire County Council - Environmental Services
Cllr Angela Lawrence	West Lindsey District Council
Chris Miller	Lincolnshire County Council - Environmental Services
Darren Nortcliffe	The Conservation Volunteers
Stuart Parker (JAC Chair)	Ramblers - Lincolnshire
Cllr Eddie Poll	Lincolnshire County Council
Cllr Tom Regis	West Lindsey District Council
Alan Robson	Churches Together in all Lincolnshire
Ella Sivil	Campaign to Protect Rural England
Tammy Smalley	Lincolnshire Wildlife Trust
Henry Smith	National Farmers Union
Cllr Lewis Strange	Lincolnshire County Council
Kay Turton	East Lindsey District Council
David White	Forestry Commission
Grant White	West Lindsey District Council

Other contributors (data gathering, peer review and wider professional input):

Charlie Barnes	Greater Lincolnshire Nature Partnership
Judy Bell	Lindsey Action Zone (LEADER)
Justin Brown	Lincolnshire County Council - Economic Development
Richard Chadd	Environment Agency & Lincolnshire Naturalists Union
Elizabeth Chamberlin	Historic England
Melanie Fisher	Defra (Local Rural Development Programme)
Deborah Fitzpatrick	Natural England
Oliver Fytche-Taylor	West Lindsey District Council
Sarah Grundy	Lincolnshire County Council
Ian Lings	Campaign for the Protection of Rural England
Tim Machin	Campaign for the Protection of Rural England

Neil McBride	Lincolnshire County Council - Planning
Vanessa McNaughton	Natural England
Rob Millbank	Environment Agency
Chris Monk	Natural England
Adam Partington	Locus Consulting
Andrew Ratcliffe	Lincolnshire County Council - Highways
Marina De Salvatore	West Lindsey District Council
Fran Smith	Greater Lincolnshire Nature Partnership
Sarah Smith	Lincolnshire County Council - Lincs Lab
Caroline Steel	Lincolnshire Wildlife Trust (retired)
Paul Tame	National Farmers Union
Marion Thomas	West Lindsey District Council
Grant White	West Lindsey District Council
Graham Willis	Campaign for the Protection of Rural England
Hugh Winfield	North East Lincolnshire Council
Dr Helen Woodhouse	Historic England

The Lincolnshire Wolds Countryside Service:

Stephen Jack, Helen Gamble, David Rodger, Ruth Craig, Will Bartle and Claire Harrison.

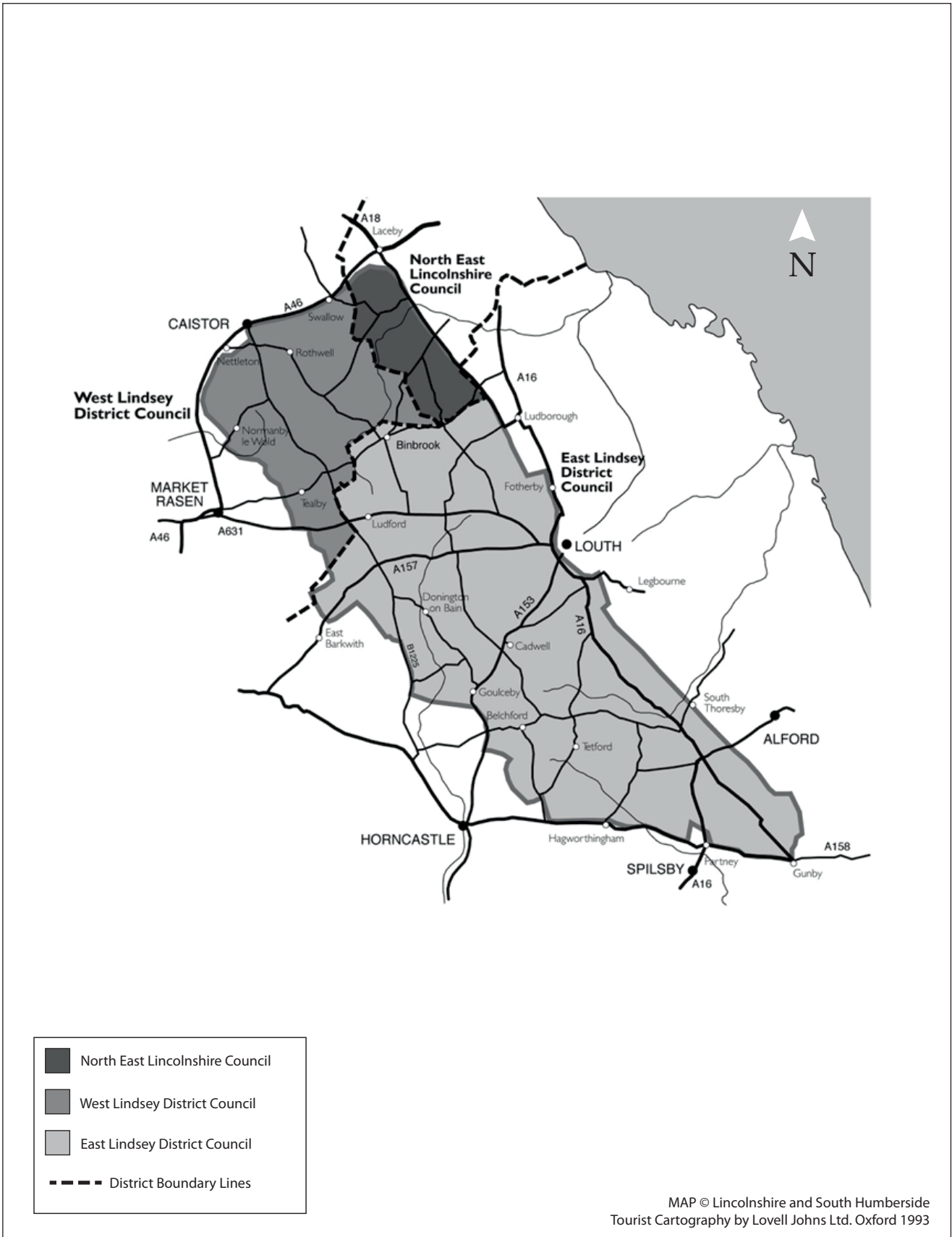
Map 1

National Map of AONBs



Map 2



Local Authority Boundary Map



Map 3

County Map of the AONB

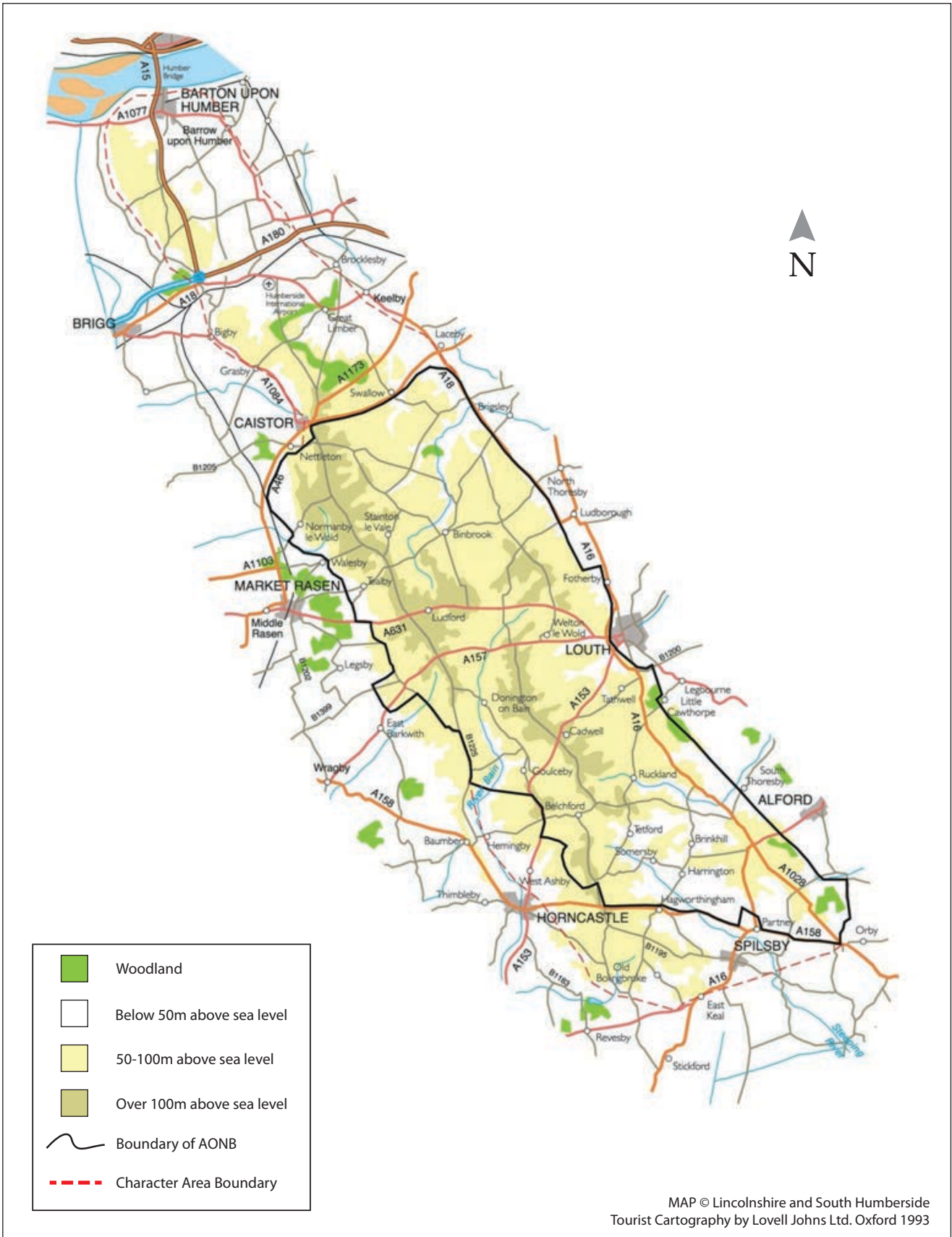


-  County of Lincolnshire
-  AONB Boundary

MAP © Lincolnshire and South Humberside
Tourist Cartography by Lovell Johns Ltd. Oxford 1993

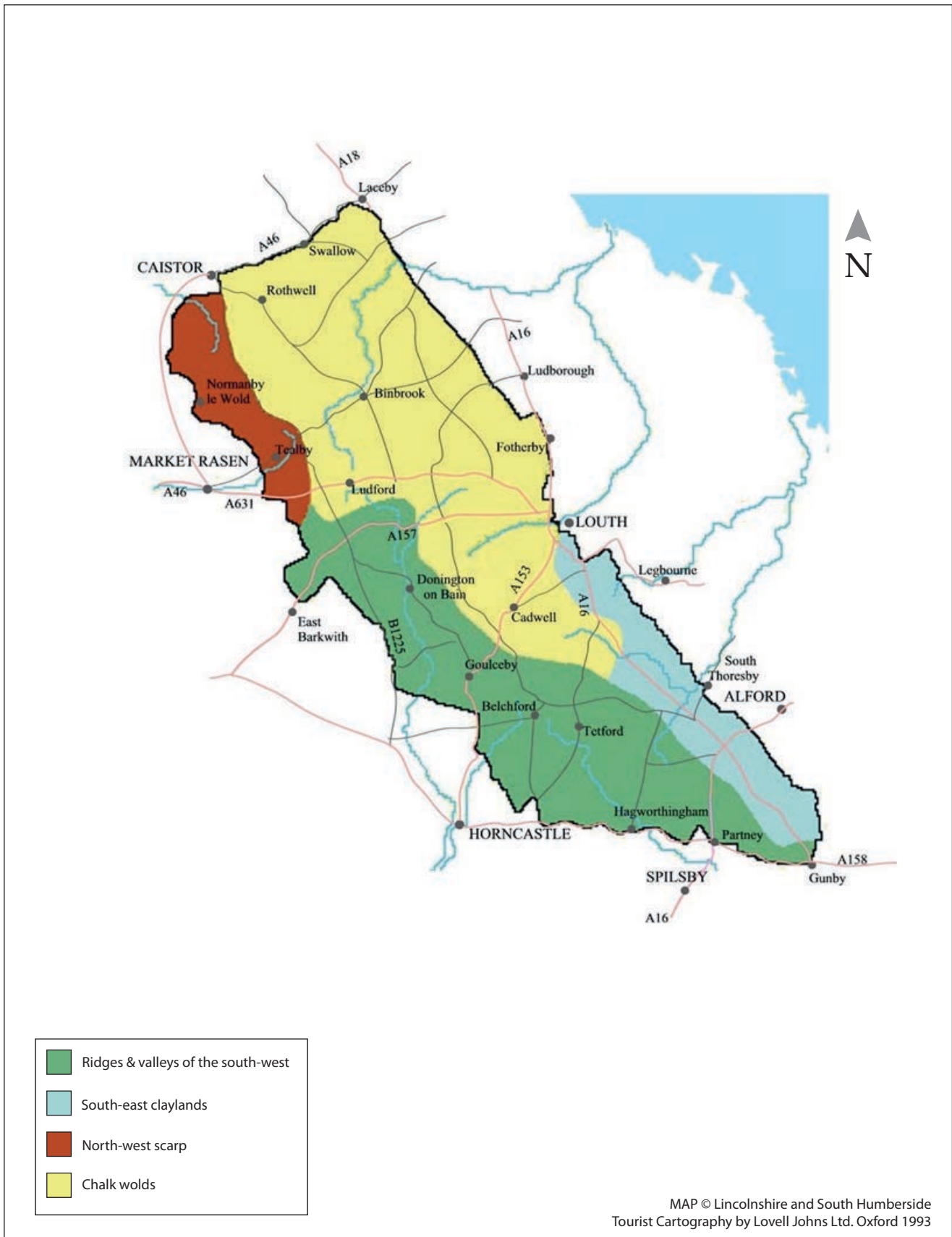
Map 4

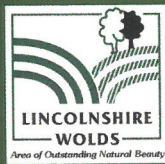
AONB/Character Area Map



Map 5

Local Landscape Character Map





Navigation Warehouse, Riverhead Road, Louth
Lincolnshire LN11 0DA
Tel: (01522) 555780
www.lincswolds.org.uk