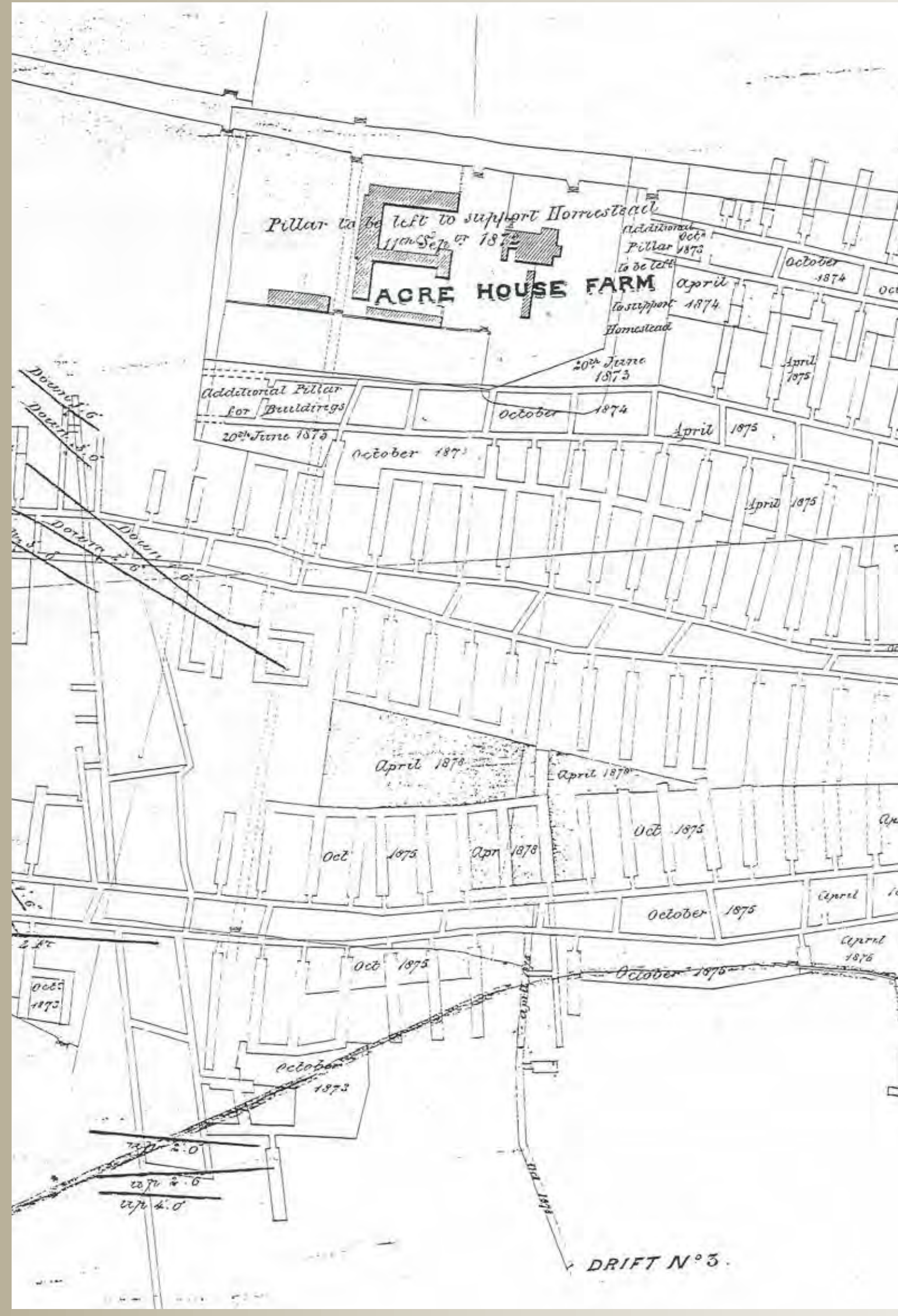


Timeline

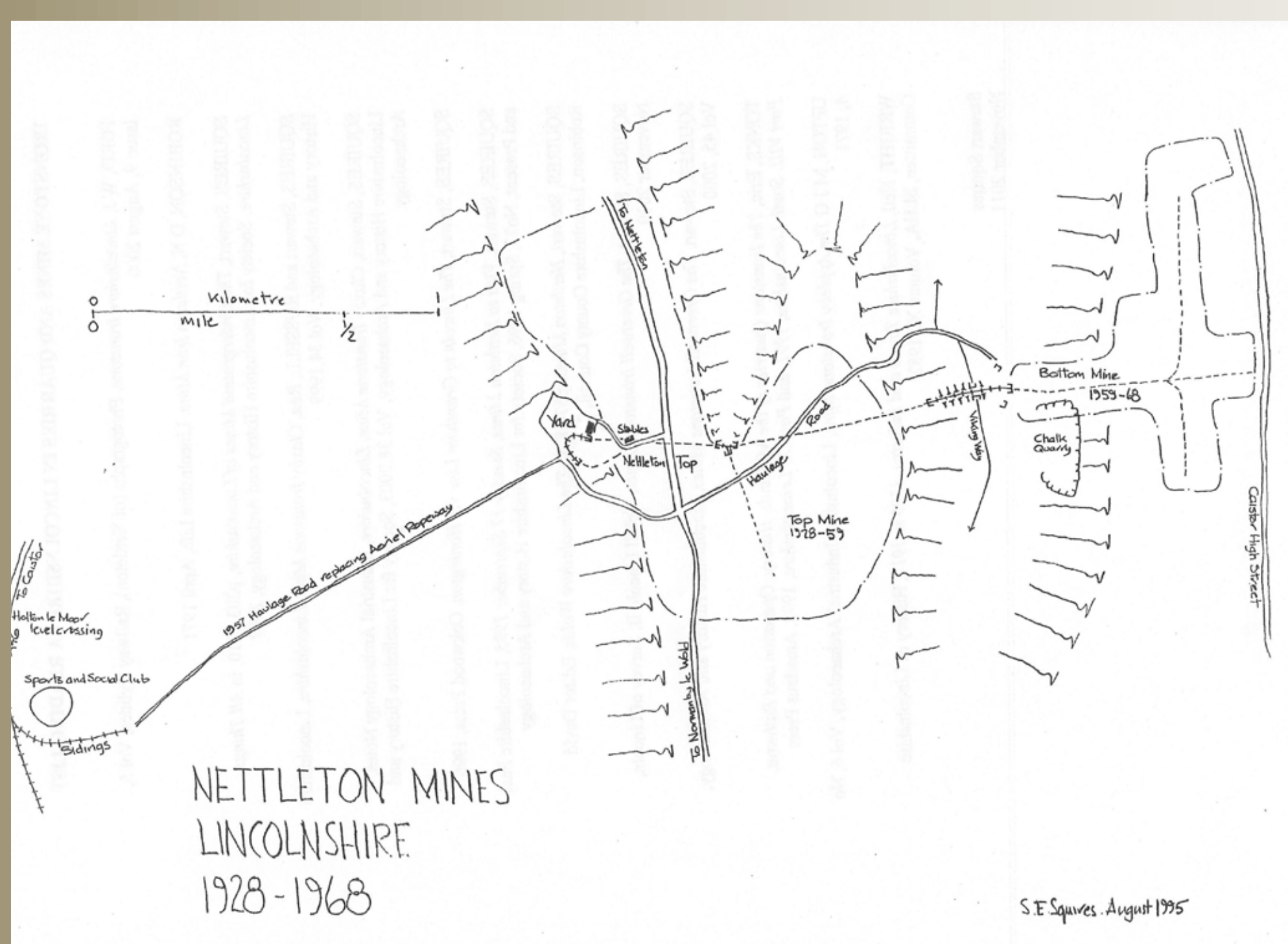


In Claxby churchyard is the grave of William Keal, of Binbrook, who died at the Claxby Mine on July 21st, 1871



One entrance and some of the Claxby mine tunnels near to Acre House Farm, Normanby le Wold

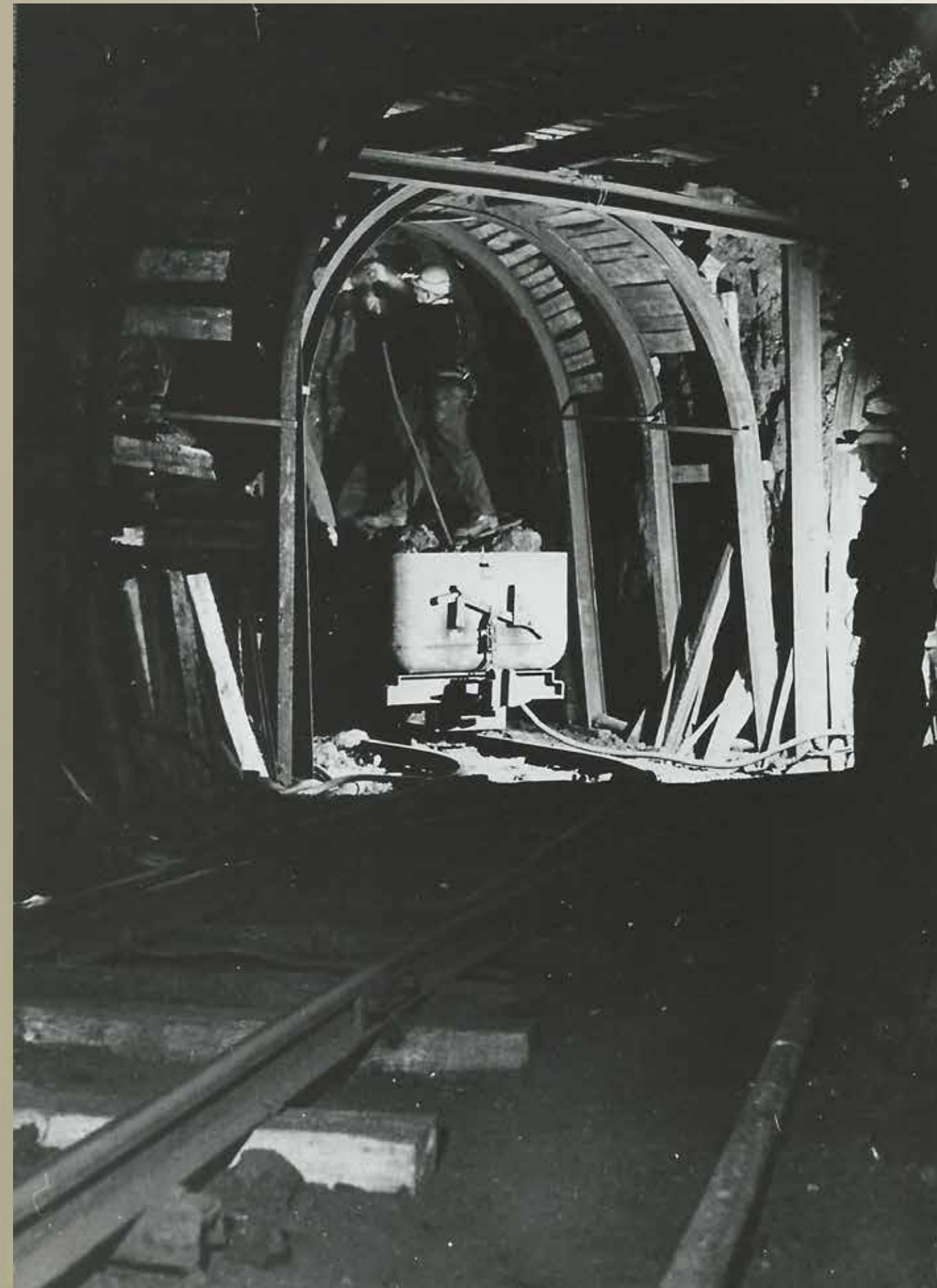
- Early 1860's Workable quantities of ironstone discovered at Claxby
- 1867 Work on the mine is underway
- 1868 Claxby Mine goes into production, operated by the West Yorkshire Iron and Coal Co who send the stone by rail to their ironworks at Ardsley, near Leeds
- 1871-73 Twenty houses built in Claxby for mineworkers and the school extended to cope with extra children
- 1872 Many deaths and injuries force the Rev Sumner, of Nettleton, to write to the papers describing the mine as 'that gloomy cavern of disaster' and seeking safety improvements
- 1873 'About 250 men' employed at Claxby, the peak year for production, of almost 70,000 tons
- 1875 'Under 100' men employed at Claxby
- 1885 Claxby Mine closes
- 1905 Workable quantities of ironstone proved at Nettleton Top
- 1928 Work on digging Nettleton Top Mine begins, by the Mid Lincolnshire Ironstone Co.
- 1934 Nettleton Top Mine goes into production
- 1937 'About 160 men' employed at Nettleton Top Mine
- 1944 Taken over by John Lysaghts, of Scunthorpe
- 1957 Work on opening up Nettleton Bottom Mine begins
- 1959-62 Ironstone taken by quarrying the hillsides around Nettleton Top Mine
- 1960 Nettleton Bottom Mine opens
- 1960 Nettleton Chalk Quarry opens to provide chalk for use in the smelting process at Scunthorpe
- 1961 Nettleton Top Mine closes
- 1961 The mines become part of the British Steel Corporation
- 1967 The year of peak production, almost 280,000 tons by 180 men
- 1968 Nettleton Bottom Mine closes
- 1971 The Chalk Quarry closes



Nettleton Mines Map 1928-1968



Inside Nettleton Top Mine, soon after opening, a loaded train is being taken to the surface



Inside Nettleton Bottom Mine a miner uses a pick driven by compressed air to dig stone



In 1968, on the day that mining ended, a group of miners posed for last day photograph outside the main entrance to Nettleton Bottom Mine

The Down Your Wold volunteers would like to thank H Bourne & Sons, the Brant family and the Society for Lincolnshire History and Archaeology for their help and assistance. There is no public access to any of the above sites. All images are copyrighted.

